



[Go to Product page](#)

Datasheet for ABIN526314

anti-GEMIN4 antibody (AA 959-1057)

3 Images

Overview

Quantity:	100 µg
Target:	GEMIN4
Binding Specificity:	AA 959-1057
Reactivity:	Human
Host:	Mouse
Clonality:	Monoclonal
Conjugate:	This GEMIN4 antibody is un-conjugated
Application:	ELISA, Western Blotting (WB), Immunofluorescence (IF)

Product Details

Purpose:	Mouse monoclonal antibody raised against a partial recombinant GEMIN4.
Immunogen:	GEMIN4 (NP_056536, 959 a.a. ~ 1057 a.a) partial recombinant protein with GST tag. MW of the GST tag alone is 26 KDa.
Sequence:	AAGPWVQGPE QDLTQEALFV YTVVFCHALH IMAMLHPEVC EPLYVLALET LTCYETLSKT NPSVSSLLQR AHEQRFLKSI AEGIGPEERR QTLLQKMSS
Clone:	3E1
Isotype:	IgG2b
Cross-Reactivity:	Human
Characteristics:	Antibody Reactive Against Recombinant Protein.

Target Details

Target:	GEMIN4
Alternative Name:	GEMIN4 (GEMIN4 Products)
Background:	Full Gene Name: gem (nuclear organelle) associated protein 4 Synonyms: DKFZp434B131,DKFZp434D174,HC56,HCAP1,HHRF-1,p97
Gene ID:	50628
NCBI Accession:	NM_015721
Pathways:	Ribonucleoprotein Complex Subunit Organization

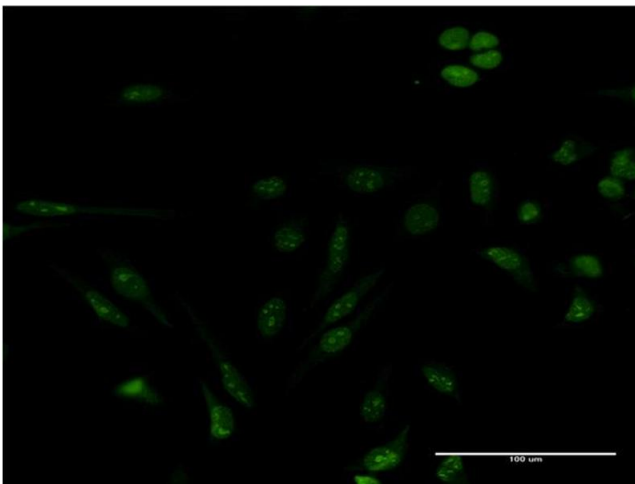
Application Details

Application Notes:	Optimal working dilution should be determined by the investigator.
Restrictions:	For Research Use only

Handling

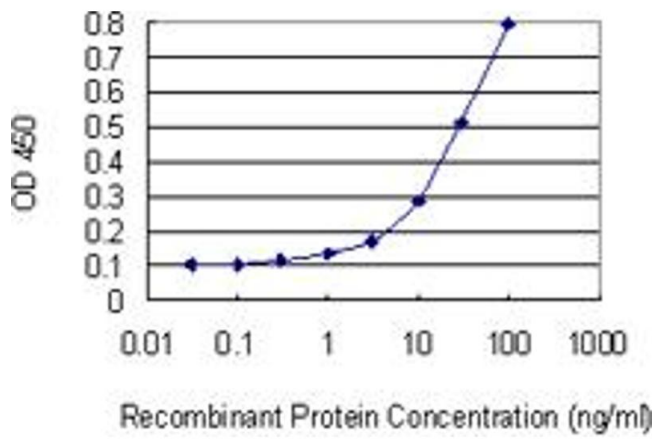
Buffer:	In 1x PBS, pH 7.4
Handling Advice:	Aliquot to avoid repeated freezing and thawing.
Storage:	-20 °C
Storage Comment:	Store at -20°C or lower. Aliquot to avoid repeated freezing and thawing.

Images



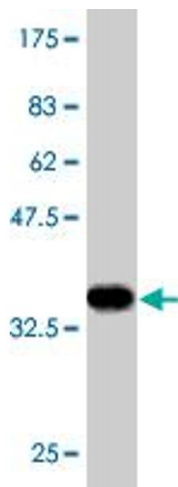
Immunofluorescence

Image 1. Immunofluorescence of monoclonal antibody to GEMIN4 on HeLa cell. [antibody concentration 10 ug/ml]



ELISA

Image 2. Detection limit for recombinant GST tagged GEMIN4 is 1 ng/ml as a capture antibody.



Western Blotting

Image 3. Western Blot detection against Immunogen (36.63 kDa).