



[Go to Product page](#)

Datasheet for ABIN526423  
**anti-LAP3 antibody (AA 1-519)**

2 Images

Overview

Quantity:	50 µg
Target:	LAP3
Binding Specificity:	AA 1-519
Reactivity:	Human
Host:	Mouse
Clonality:	Polyclonal
Conjugate:	This LAP3 antibody is un-conjugated
Application:	Western Blotting (WB)

Product Details

Purpose:	Mouse polyclonal antibody raised against a full-length human LAP3 protein.
Immunogen:	LAP3 (NP_056991.2, 1 a.a. ~ 519 a.a) full-length human protein.
Sequence:	MFLLPLPAAG RVVVRRLA VR RFGSRSLSTA DMTKGLVLGI YSKEKEDDVP QFTSAGENFD KLLAGKLRET LNISGPPLKA GKTRTFYGLH QDFPSVVLVG LGKKAAGIDE QENWHEGKEN IRAAVAAGCR QIQDLELSSV EVDPCGDAQA AAEGAVLGLY EYDDLKQKKK MAVSAKLYGS GDQEAWQKGV LFASGQNLAR QLMETPANEM TPTRFAEII KNLKSASSKT EVHIRPKSWI EEQAMGSFLS VAKGSDEPPV FLEIHYKGSP NANEPPLV FV GKGITFDSGG ISIKASANMD LMRADMGGA TICSAIVSAA KLNLPINIIG LAPLCENMPS GKANKPGDVV RAKNGKTIQV DNTDAEGR LI LADALCYAHT FNPVKVILNAA TLTGAMDVAL GSGATGVFTN SSWLWNLKFE AS IETGDRVW RMPLFEHYTR QV VDCQLADV NNIGKYRSAG ACTAA AFLKE FVTHPKWAHL DIAGVMTNKD E VPYLRKGMT GRPTRTLIEF LLRFSQDNA

## Product Details

---

Cross-Reactivity:	Human
Characteristics:	Antibody reactive against mammalian transfected lysate.

## Target Details

---

Target:	LAP3
Alternative Name:	LAP3 ( <a href="#">LAP3 Products</a> )
Background:	Full Gene Name: leucine aminopeptidase 3 Synonyms: LAP,LAPEP,PEPS
Gene ID:	51056
NCBI Accession:	<a href="#">NM_015907</a>

## Application Details

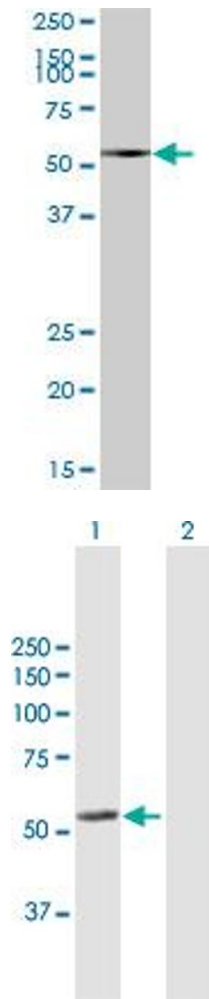
---

Application Notes:	Optimal working dilution should be determined by the investigator.
Restrictions:	For Research Use only

## Handling

---

Buffer:	In 1x PBS, pH 7.4
Handling Advice:	Aliquot to avoid repeated freezing and thawing.
Storage:	-20 °C
Storage Comment:	Store at -20°C or lower. Aliquot to avoid repeated freezing and thawing.



#### Western Blotting

**Image 1.** LAP3 MaxPab polyclonal antibody. Western Blot analysis of LAP3 expression in human pancreas.

#### Western Blotting

**Image 2.** Western Blot analysis of LAP3 expression in transfected 293T cell line by LAP3 MaxPab polyclonal antibody.

Lane1:LAP3 transfected lysate(57.09 KDa).

Lane2:Non-transfected lysate.