



[Go to Product page](#)

Datasheet for ABIN526425
anti-LAP3 antibody (AA 420-519)

2 Images

Overview

Quantity:	100 µg
Target:	LAP3
Binding Specificity:	AA 420-519
Reactivity:	Human
Host:	Mouse
Clonality:	Monoclonal
Conjugate:	This LAP3 antibody is un-conjugated
Application:	Western Blotting (WB), ELISA

Product Details

Purpose:	Mouse monoclonal antibody raised against a partial recombinant LAP3.
Immunogen:	LAP3 (NP_056991, 420 a.a. ~ 519 a.a) partial recombinant protein with GST tag. MW of the GST tag alone is 26 KDa.
Sequence:	EASLETGDRV WRMPLFEHYT RQVDCQLAD VNNIGKYRSA GACTAAAFK EFVTHPKWAH LDIAGVMTNK DEVPYLRKGM TGRPRTLIE FLLRFSQDNA
Clone:	4G10
Isotype:	IgG2a
Cross-Reactivity:	Human
Characteristics:	Antibody Reactive Against Recombinant Protein.

Target Details

Target:	LAP3
Alternative Name:	LAP3 (LAP3 Products)
Background:	Full Gene Name: leucine aminopeptidase 3 Synonyms: LAP,LAPEP,PEPS
Gene ID:	51056
NCBI Accession:	NM_015907

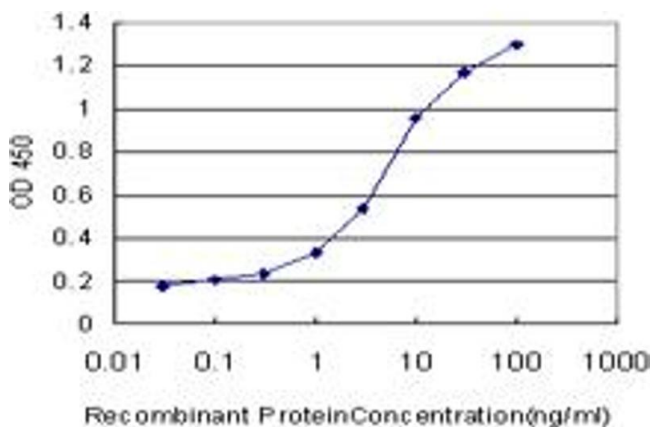
Application Details

Application Notes:	Optimal working dilution should be determined by the investigator.
Restrictions:	For Research Use only

Handling

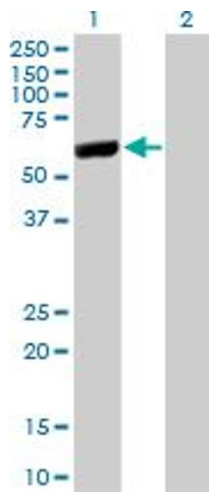
Buffer:	In 1x PBS, pH 7.4
Handling Advice:	Aliquot to avoid repeated freezing and thawing.
Storage:	-20 °C
Storage Comment:	Store at -20°C or lower. Aliquot to avoid repeated freezing and thawing.

Images



ELISA

Image 1. Detection limit for recombinant GST tagged LAP3 is approximately 0.03ng/ml as a capture antibody.



Western Blotting

Image 2. Western Blot analysis of LAP3 expression in transfected 293T cell line by LAP3 monoclonal antibody (M02), clone 4G10.

Lane 1: LAP3 transfected lysate(56.2 KDa).

Lane 2: Non-transfected lysate.