



[Go to Product page](#)

Datasheet for ABIN526454  
**anti-MECR antibody (AA 1-373)**

1 Image

Overview

Quantity:	50 µg
Target:	MECR
Binding Specificity:	AA 1-373
Reactivity:	Human
Host:	Mouse
Clonality:	Polyclonal
Conjugate:	This MECR antibody is un-conjugated
Application:	Western Blotting (WB)

Product Details

Purpose:	Mouse polyclonal antibody raised against a full-length human MECR protein.
Immunogen:	MECR (NP_057095.2, 1 a.a. ~ 373 a.a) full-length human protein.
Sequence:	MWVCSTLWRV RTPARQWRGL LPASGCHGPA ASSYSASAEP ARVRALVYGH HGDDPAKVVEL KNLELAAVRG SDVRVKMLAA PINPSDINMI QGNYGFLPEL PAVGGNEGVA QVAVGSNVT GLKPGDWVIP ANAGLGTWRT EAVFSEEALI QVPSDIPLQS AATLGVNPCT AYRMLMDFEQ LQPGDSVIQN ASNSGVGQAV IQIAAALGLR TINVVRDRPD IQKLSDRLKS LGAEHVITEE ELRRPEMKNF FKDMPQRLA LNCVGGKSST ELLRQLARGG TMVTYGGMAK QPVVASVSL IFKDLKLRGF WLSQWKKDHS PDQFKELILT LCDLIRRGQL TAPACSQVPL QDYQSALEAS MKPFISSKQI LTM
Cross-Reactivity:	Human
Characteristics:	Antibody reactive against mammalian transfected lysate.

## Target Details

Target:	MECR
Alternative Name:	MECR ( <a href="#">MECR Products</a> )
Background:	Full Gene Name: mitochondrial trans-2-enoyl-CoA reductase Synonyms: CGI-63,FASN2B,NRBF1
Gene ID:	51102
NCBI Accession:	<a href="#">NM_016011</a>

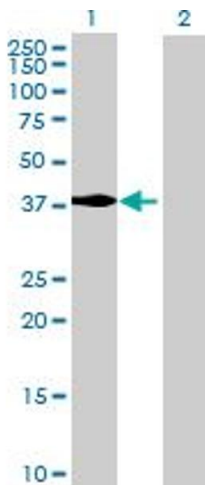
## Application Details

Application Notes:	Optimal working dilution should be determined by the investigator.
Restrictions:	For Research Use only

## Handling

Buffer:	In 1x PBS, pH 7.4
Handling Advice:	Aliquot to avoid repeated freezing and thawing.
Storage:	-20 °C
Storage Comment:	Store at -20°C or lower. Aliquot to avoid repeated freezing and thawing.

## Images



### Western Blotting

**Image 1.** Western Blot analysis of MECR expression in transfected 293T cell line by MECR MaxPab polyclonal antibody.

Lane 1: MECR transfected lysate(41.03 KDa).

Lane 2: Non-transfected lysate.