



[Go to Product page](#)

Datasheet for ABIN526458  
**anti-PHF20L1 antibody (AA 1-285)**

3 Images

Overview

Quantity:	50 µg
Target:	PHF20L1
Binding Specificity:	AA 1-285
Reactivity:	Human
Host:	Mouse
Clonality:	Polyclonal
Conjugate:	This PHF20L1 antibody is un-conjugated
Application:	Western Blotting (WB), Immunofluorescence (IF)

Product Details

Purpose:	Mouse polyclonal antibody raised against a full-length human PHF20L1 protein.
Immunogen:	PHF20L1 (NP_940915.1, 1 a.a. ~ 285 a.a) full-length human protein.
Sequence:	MSKKPPNRPG ITFEIGARLE ALDYLQKWYP SRIEKIDYEE GKMLVHFERW SHRYDEWIYW DSNRLRPLER PALRKEGLKD EEDFFDFKAG EEVLARWTDC RYYPKIEAI NKEGTFTVQF YDGVIRCLKR MHIKAMPEDA KGQDWIALVK AAAAAAANKK TGSKPRTSAN SNKDKDKDER KWFKVPKKE ETSTCIATPD VEKKEDLPTS SETFGLHVEN VPKMVFPQPE STLSNKRKNN QGNSFQAKRA RLNKITGLLA SKAVGVDGAE KKEDYNETAP MLEQV
Cross-Reactivity:	Human
Characteristics:	Antibody reactive against mammalian transfected lysate.

## Target Details

Target:	PHF20L1
Alternative Name:	PHF20L1 ( <a href="#">PHF20L1 Products</a> )
Background:	Full Gene Name: PHD finger protein 20-like 1 Synonyms: CGI-72,MGC64923
Gene ID:	51105
NCBI Accession:	<a href="#">NM_198513</a>

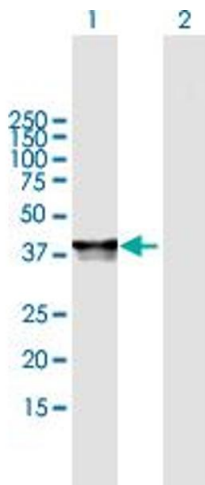
## Application Details

Application Notes:	Optimal working dilution should be determined by the investigator.
Restrictions:	For Research Use only

## Handling

Buffer:	In 1x PBS, pH 7.4
Handling Advice:	Aliquot to avoid repeated freezing and thawing.
Storage:	-20 °C
Storage Comment:	Store at -20°C or lower. Aliquot to avoid repeated freezing and thawing.

## Images

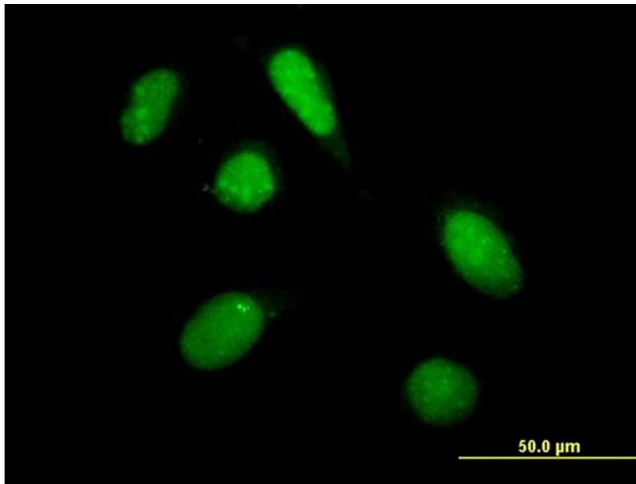


### Western Blotting

**Image 1.** Western Blot analysis of PHF20L1 expression in transfected 293T cell line by PHF20L1 MaxPab polyclonal antibody.

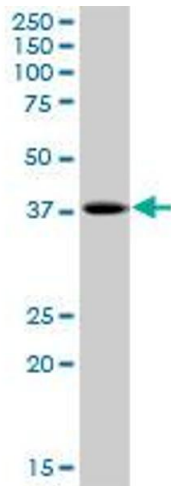
Lane 1: PHF20L1 transfected lysate(31.35 KDa).

Lane 2: Non-transfected lysate.



### Immunofluorescence

**Image 2.** Immunofluorescence of purified MaxPab antibody to PHF20L1 on HeLa cell. [antibody concentration 10 ug/ml]



### Western Blotting

**Image 3.** PHF20L1 MaxPab polyclonal antibody. Western Blot analysis of PHF20L1 expression in Jurkat.