

Datasheet for ABIN526485
anti-RLIM antibody (AA 1-624)



[Go to Product page](#)

1 Image

Overview

Quantity:	50 µg
Target:	RLIM
Binding Specificity:	AA 1-624
Reactivity:	Human
Host:	Mouse
Clonality:	Polyclonal
Conjugate:	This RLIM antibody is un-conjugated
Application:	Western Blotting (WB)

Product Details

Purpose:	Mouse polyclonal antibody raised against a full-length human RNF12 protein.
Immunogen:	RNF12 (NP_057204.2, 1 a.a. ~ 624 a.a) full-length human protein.
Sequence:	MENSDSNDKG SGDQSAQRR SQMDRLDREE AFYQFVNNLS EEDYRLMRDN NLLGTPGEST EEELLRRLQQ IKEGPPQNS DENRGGDSSD DVSNGDSIID WLNSVRQTGN TTRSGQRGNQ SWRAVSRTNP NSGDFRFSLE INVNRNNGSQ NSENEPEPSA RRSSGENVEN NSQRQVENPR SESTSARPSR SERNSTEALT EVPPTRGQRR ARSRSPDHR TRARAERSRS PLHPMSEIPR RSHHSISSQT FEHPLVNETE GSSRTRHHVT LRQQISGPEL LSRGLFAASG TRNASQGAGS SDTAASGEST GSGQRPPTIV LDLQVRRVRP GEYRQRDSIA SRTRSRSQTP NNTVTYESER GGFRRTFSRS ERAGVRTYVS TIRIPRIL NTGLSETTSV AIQTMLRQIM TGFGELSYFM YSDSDSEPTG SVSNRMERA ESRSGRGGSG GGSSSGSSSS SSSSSSSSS SSSSSPSSS SGGESSETSS DLFEGSNEGS SSSGSSGARR EGRHRAPVTF DESGSLPFLS LAQFFLLNED DDDQPRGLTK EQIDNLAMRS FGENDALKTC SVCITEYTEG NKLRKLPCSH EYHVHCIDRW

Product Details

LSENSTCPIC RRAVLASG NR ESVV

Cross-Reactivity: Human

Characteristics: Antibody reactive against mammalian transfected lysate.

Target Details

Target: RLIM

Alternative Name: RNF12 ([RLIM Products](#))

Background: Full Gene Name: ring finger protein 12
Synonyms: MGC15161,NY-REN-43,RLIM

Gene ID: 51132

NCBI Accession: [NM_016120](#)

Application Details

Application Notes: Optimal working dilution should be determined by the investigator.

Restrictions: For Research Use only

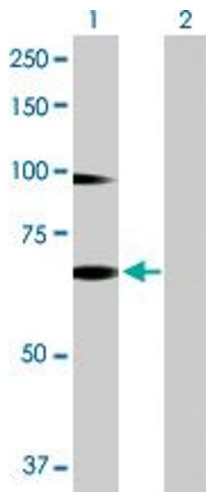
Handling

Buffer: In 1x PBS, pH 7.4

Handling Advice: Aliquot to avoid repeated freezing and thawing.

Storage: -20 °C

Storage Comment: Store at -20°C or lower. Aliquot to avoid repeated freezing and thawing.



Western Blotting

Image 1. Western Blot analysis of RNF12 expression in transfected 293T cell line by RNF12 MaxPab polyclonal antibody.

Lane 1: RNF12 transfected lysate(68.64 KDa).

Lane 2: Non-transfected lysate.