

Datasheet for ABIN526509
anti-SERPINA10 antibody (AA 1-444)



[Go to Product page](#)

2 Images

Overview

Quantity:	100 µg
Target:	SERPINA10
Binding Specificity:	AA 1-444
Reactivity:	Human
Host:	Rabbit
Clonality:	Polyclonal
Conjugate:	This SERPINA10 antibody is un-conjugated
Application:	Western Blotting (WB)

Product Details

Purpose:	Rabbit polyclonal antibody raised against a full-length human SERPINA10 protein.
Immunogen:	SERPINA10 (NP_057270.1, 1 a.a. ~ 444 a.a) full-length human protein.
Sequence:	MKVVPSLLLS VLLAQVWLVP GLAPSPQSPE TPAPQNQTSR VVQAPKEEEE DEQEASEEKA SEEEKAWLMA SRQLAKETS NFGFSLLRKI SMRHDGNMVF SPFGMSLAMT GLMLGATGPT ETQIKRGLHL QALKPTK PGL LPSLFKGLRE TLSRNLELGL TQGSFAFIHK DFDVKETFFN LSKRYFDTEC VPMNFRNASQ AKRLMNHYIN KETRGKIPKL FDEINPETKL ILVDYILFKG KWLTPFDVPV TEVDTFHLDK YTIKVPMMY GAGKFASTFD KNFRCHVLKL PYQGNATMLV VLMEKMGDHL ALEDYLTTDL VETWLRNMKT RNMEVFFPKF KLDQKYEMHE LLRQMGIRRI FSPFADLSEL SATGRNLQVS RVLQRTVIEV DERGTEAVAG ILSEITAYSM PPVIKVDPRPF HFMIYEETSG MLLFLGRVVN PTL
Cross-Reactivity:	Human

Product Details

Characteristics: Antibody reactive against mammalian transfected lysate.

Target Details

Target: SERPINA10

Alternative Name: SERPINA10 ([SERPINA10 Products](#))

Background: Full Gene Name: serpin peptidase inhibitor, clade A (alpha-1 antiproteinase, antitrypsin), member 10
Synonyms: PZI,ZPI

Gene ID: 51156

NCBI Accession: [NM_016186](#)

Application Details

Application Notes: Optimal working dilution should be determined by the investigator.

Restrictions: For Research Use only

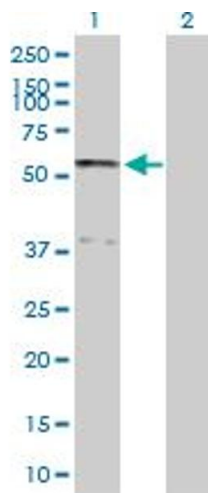
Handling

Buffer: In 1x PBS, pH 7.4

Handling Advice: Aliquot to avoid repeated freezing and thawing.

Storage: -20 °C

Storage Comment: Store at -20°C or lower. Aliquot to avoid repeated freezing and thawing.

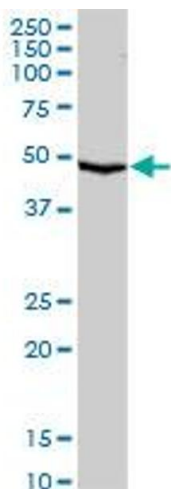


Western Blotting

Image 1. Western Blot analysis of SERPINA10 expression in transfected 293T cell line by SERPINA10 MaxPab polyclonal antibody.

Lane 1: SERPINA10 transfected lysate(50.70 KDa).

Lane 2: Non-transfected lysate.



Western Blotting

Image 2. SERPINA10 MaxPab rabbit polyclonal antibody. Western Blot analysis of SERPINA10 expression in human kidney.