



[Go to Product page](#)

Datasheet for ABIN526514
anti-DBR1 antibody (AA 1-544)

2 Images

Overview

Quantity:	50 µg
Target:	DBR1
Binding Specificity:	AA 1-544
Reactivity:	Human
Host:	Mouse
Clonality:	Polyclonal
Conjugate:	This DBR1 antibody is un-conjugated
Application:	Western Blotting (WB), Immunofluorescence (IF)

Product Details

Purpose:	Mouse polyclonal antibody raised against a full-length human DBR1 protein.
Immunogen:	DBR1 (NP_057300.2, 1 a.a. ~ 544 a.a) full-length human protein.
Sequence:	MRVAVAGCCH GELDKIYETL ALAERRGPGP VDLLLCCGDF QAVRNEADLR CMAVPPKYRH MQTFYRYYSG EKKAPVLTFL IGGNHEASNH LQELPYGGWV APNIYYLGLA GVVKYRGVRI GGISGIFKSH DYRKGHFCEP PYNSSTIRSI YHVRNIEVYK LKQLKQPIDI FLSHDWPRSI YHYGNKKQLL KTKSFFRQEV ENNTLGSPAA SELLEHLKPT YWFS AHLHVK FAALMQHQAK DKGQTARATK FLALDKCLPH RDFLQILEIE HDPSAPDYLE YDIEWLTILR ATDDLINVTG RLWNMPENNG LHARWDYSAT EEGMKEVLEK LNHD LKVPCN FSVTAACYDP SKPQTQMQLI HRINPQTTEF CAQLGIIDIN VRLQKSKEEH HVCGEYEEQD DVESNDSGED QSEYNTDTSA LSSINPDEIM LDEEEDSDSI VSAHSGMNTP SVEPSDQASE FSASFSDVRI LPGSMIVSSD DTVDSTIDRE GKPGGTVESG NGEDLTKVPL KRLSDEHEPE QRKKIKRRNQ AIYAAVDDDD DDA

Product Details

Cross-Reactivity:	Human
Characteristics:	Antibody reactive against mammalian transfected lysate.

Target Details

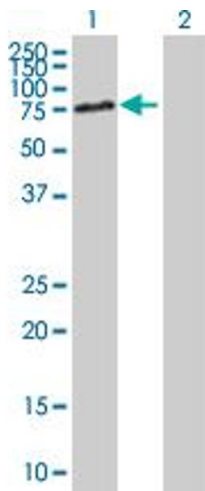
Target:	DBR1
Alternative Name:	DBR1 (DBR1 Products)
Background:	Full Gene Name: debranching enzyme homolog 1 (S. cerevisiae) Synonyms:
Gene ID:	51163
NCBI Accession:	NM_016216

Application Details

Application Notes:	Optimal working dilution should be determined by the investigator.
Restrictions:	For Research Use only

Handling

Buffer:	In 1x PBS, pH 7.4
Handling Advice:	Aliquot to avoid repeated freezing and thawing.
Storage:	-20 °C
Storage Comment:	Store at -20°C or lower. Aliquot to avoid repeated freezing and thawing.

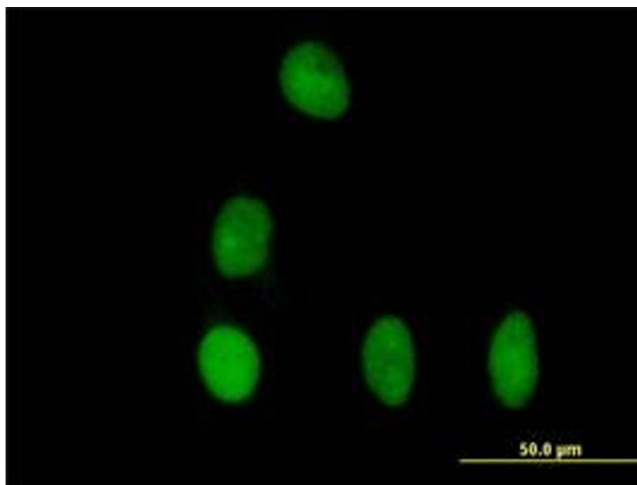


Western Blotting

Image 1. Western Blot analysis of DBR1 expression in transfected 293T cell line by DBR1 MaxPab polyclonal antibody.

Lane 1: DBR1 transfected lysate(59.84 KDa).

Lane 2: Non-transfected lysate.



Immunofluorescence

Image 2. Immunofluorescence of purified MaxPab antibody to DBR1 on HeLa cell. (antibody concentration 10 μg/mL)