



[Go to Product page](#)

Datasheet for ABIN526531
anti-LEF1 antibody (AA 33-138)

2 Images

Overview

Quantity:	100 µg
Target:	LEF1
Binding Specificity:	AA 33-138
Reactivity:	Human
Host:	Mouse
Clonality:	Monoclonal
Conjugate:	This LEF1 antibody is un-conjugated
Application:	Western Blotting (WB), ELISA

Product Details

Purpose:	Mouse monoclonal antibody raised against a full length recombinant LEF1.
Immunogen:	LEF1 (NP_057353, 33 a.a. ~ 138 a.a) full-length recombinant protein with GST tag. MW of the GST tag alone is 26 KDa.
Sequence:	QKEKIFAEIS HPEEEGLDAD IKSSLVNESE IIPASNGHEV ARQAQTSQEP YHDKAREHPD DGKHPDGGLY NKGPSYSSYS GYIMMPNMNN DPYMSNGSL S PPIPR T
Clone:	2E2
Isotype:	IgG2b
Cross-Reactivity:	Human
Characteristics:	Antibody Reactive Against Recombinant Protein.

Target Details

Target:	LEF1
Alternative Name:	LEF1 (LEF1 Products)
Background:	Full Gene Name: lymphoid enhancer-binding factor 1 Synonyms: DKFZp586H0919,TCF1ALPHA
Gene ID:	51176
NCBI Accession:	NM_016269
Pathways:	WNT Signaling , Intracellular Steroid Hormone Receptor Signaling Pathway , Regulation of Hormone Metabolic Process , Nuclear Hormone Receptor Binding , Chromatin Binding

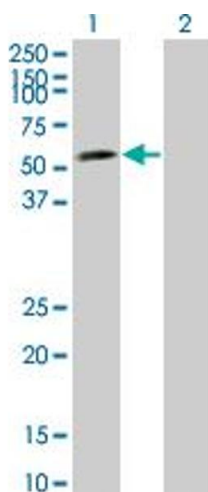
Application Details

Application Notes:	Optimal working dilution should be determined by the investigator.
Restrictions:	For Research Use only

Handling

Buffer:	In 1x PBS, pH 7.4
Handling Advice:	Aliquot to avoid repeated freezing and thawing.
Storage:	-20 °C
Storage Comment:	Store at -20°C or lower. Aliquot to avoid repeated freezing and thawing.

Images

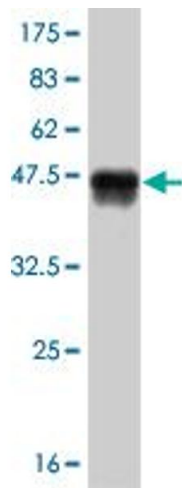


Western Blotting

Image 1. Western Blot analysis of LEF1 expression in transfected 293T cell line by LEF1 monoclonal antibody (M08), clone 2E2.

Lane 1: LEF1 transfected lysate(44.2 KDa).

Lane 2: Non-transfected lysate.



Western Blotting

Image 2. Western Blot detection against Immunogen (37.29 kDa).