



[Go to Product page](#)

Datasheet for ABIN526616
anti-RASL12 antibody (AA 1-266)

1 Image

Overview

Quantity:	50 µg
Target:	RASL12
Binding Specificity:	AA 1-266
Reactivity:	Human
Host:	Mouse
Clonality:	Polyclonal
Conjugate:	This RASL12 antibody is un-conjugated
Application:	Western Blotting (WB)

Product Details

Purpose:	Mouse polyclonal antibody raised against a full-length human RASL12 protein.
Immunogen:	RASL12 (NP_057647.1, 1 a.a. ~ 266 a.a) full-length human protein.
Sequence:	MSSVFGKPRA GSGPQSAPLE VNLAILGRRG AGKSALTVKF LTKRFISEYD PNLEDTYSSE ETVDHQPVHL RVMDTADLDT PRNCERYLNW AHAFLLVVYSV DSRQSFSSS SYLELLALHA KETQRSIPAL LLGNKLDMAQ YRQVTKAEGV ALAGRFGCLF FEVSACLDLFE HVQHVFHEAV REARRELEKS PLTRPLFISE ERALPHQAPL TARHGLASCT FNTLSTINLK EMPTVAQAKL VTVKSSRAQS KRKAPTLTLL KGFKIF
Cross-Reactivity:	Human
Characteristics:	Antibody reactive against mammalian transfected lysate.

Target Details

Target:	RASL12
Alternative Name:	RASL12 (RASL12 Products)
Background:	Full Gene Name: RAS-like, family 12 Synonyms: RIS
Gene ID:	51285
NCBI Accession:	NM_016563

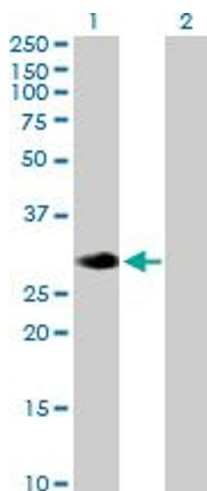
Application Details

Application Notes:	Optimal working dilution should be determined by the investigator.
Restrictions:	For Research Use only

Handling

Buffer:	In 1x PBS, pH 7.4
Handling Advice:	Aliquot to avoid repeated freezing and thawing.
Storage:	-20 °C
Storage Comment:	Store at -20°C or lower. Aliquot to avoid repeated freezing and thawing.

Images



Western Blotting

Image 1. Western Blot analysis of RASL12 expression in transfected 293T cell line by RASL12 MaxPab polyclonal antibody.

Lane 1: RASL12 transfected lysate(29.26 KDa).

Lane 2: Non-transfected lysate.