



[Go to Product page](#)

Datasheet for ABIN526627
anti-FKBP11 antibody (AA 1-201)

2 Images

Overview

Quantity:	50 µg
Target:	FKBP11
Binding Specificity:	AA 1-201
Reactivity:	Human
Host:	Mouse
Clonality:	Polyclonal
Conjugate:	This FKBP11 antibody is un-conjugated
Application:	Western Blotting (WB)

Product Details

Purpose:	Mouse polyclonal antibody raised against a full-length human FKBP11 protein.
Immunogen:	FKBP11 (NP_057678.1, 1 a.a. ~ 201 a.a) full-length human protein.
Sequence:	MTLRPSLLPL HLLLLLLLSA AVCRAEAGLE TESPVRTLQV ETLVEPPEPC AEPAAFQDTL HIHYTGSLVD GRIIDTSLTR DPLVIELGQK QVIPGLEQSL LDMCVGEKRR AIIPSHLAYG KRGFPPSVPA DAVVQYDVEL IALIRANYWL KLVKGILPLV GMAMVPALLG LIGYHLYRKA NRPKVSKKKL KEEKRNKSKK K
Cross-Reactivity:	Human
Characteristics:	Antibody reactive against mammalian transfected lysate.

Target Details

Target:	FKBP11
---------	--------

Target Details

Alternative Name:	FKBP11 (FKBP11 Products)
Background:	Full Gene Name: FK506 binding protein 11, 19 kDa Synonyms: FKBP19,MGC54182
Gene ID:	51303
NCBI Accession:	NM_016594

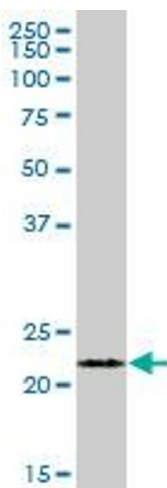
Application Details

Application Notes:	Optimal working dilution should be determined by the investigator.
Restrictions:	For Research Use only

Handling

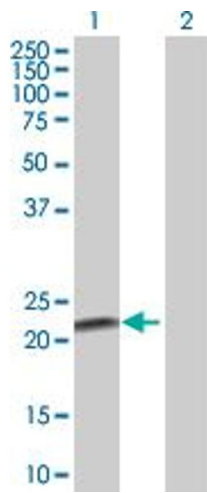
Buffer:	In 1x PBS, pH 7.4
Handling Advice:	Aliquot to avoid repeated freezing and thawing.
Storage:	-20 °C
Storage Comment:	Store at -20°C or lower. Aliquot to avoid repeated freezing and thawing.

Images



Western Blotting

Image 1. FKBP11 MaxPab polyclonal antibody. Western Blot analysis of FKBP11 expression in human pancreas.



Western Blotting

Image 2. Western Blot analysis of FKBP11 expression in transfected 293T cell line by FKBP11 MaxPab polyclonal antibody.

Lane 1: FKBP11 transfected lysate(22.11 KDa).

Lane 2: Non-transfected lysate.