



[Go to Product page](#)

Datasheet for ABIN526630
anti-REEP2 antibody (AA 1-252)

1 Image

Overview

Quantity:	50 µg
Target:	REEP2
Binding Specificity:	AA 1-252
Reactivity:	Human
Host:	Mouse
Clonality:	Polyclonal
Conjugate:	This REEP2 antibody is un-conjugated
Application:	Western Blotting (WB)

Product Details

Purpose:	Mouse polyclonal antibody raised against a full-length human C5orf19 protein.
Immunogen:	C5orf19 (AAH06218, 1 a.a. ~ 252 a.a) full-length human protein.
Sequence:	MVSWIISRLV VLIFGTLYPA YSSYKAVKTK NVKEYVKWMM YWIVFAFFTT AETLTDIVLS WFPFYFELKI AFVIWLLSPY TKGSSVLYRK FVHPTLSNKE KEIDEYITQA RDKSYETMMR VGKRGLNLAA NAAVTAAAKG VLSEKLSRFS MQDLTLIRDE DALPLQRPDG RLRPSPGSL DTIEDLGDDP ALSLRSTNP ADSRTEASED DMGDKAPKRA KPIKKAPKAE PLASKTLKTR PKKKTSGGGD SA
Cross-Reactivity:	Human
Characteristics:	Antibody reactive against mammalian transfected lysate.

Target Details

Target: REEP2

Alternative Name: REEP2 ([REEP2 Products](#))

Background: Full Gene Name: receptor accessory protein 2
Synonyms: C5orf19,SGC32445

Gene ID: 51308

Application Details

Application Notes: Optimal working dilution should be determined by the investigator.

Restrictions: For Research Use only

Handling

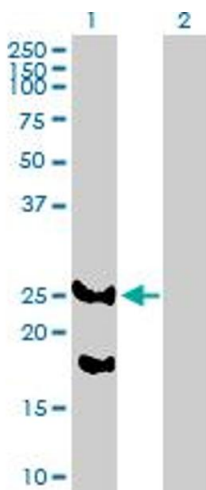
Buffer: In 1x PBS, pH 7.4

Handling Advice: Aliquot to avoid repeated freezing and thawing.

Storage: -20 °C

Storage Comment: Store at -20°C or lower. Aliquot to avoid repeated freezing and thawing.

Images



Western Blotting

Image 1. Western Blot analysis of REEP2 expression in transfected 293T cell line by REEP2 MaxPab polyclonal antibody.

Lane 1: C5orf19 transfected lysate(27.83 KDa).

Lane 2: Non-transfected lysate.