



[Go to Product page](#)

Datasheet for ABIN526726
anti-RNF138 antibody (AA 1-245)

1 Image

Overview

Quantity:	100 µg
Target:	RNF138
Binding Specificity:	AA 1-245
Reactivity:	Human
Host:	Rabbit
Clonality:	Polyclonal
Conjugate:	This RNF138 antibody is un-conjugated
Application:	Western Blotting (WB)

Product Details

Purpose:	Rabbit polyclonal antibody raised against a full-length human RNF138 protein.
Immunogen:	RNF138 (NP_057355.2, 1 a.a. ~ 245 a.a) full-length human protein.
Sequence:	MAEDLSAATS YTEDDFYCPV CQEVLKTPVR TTACQHVFCR KCFLTAMRES GAHCPLCRGN VTRRERACPE RALDLENIMR KFSGSCRCCA KQIKFYRMRH HYKSCCKYQD EYGVSSIIPN FQISQDSVGN SNRSETSTSD NTETYQENTS SSGHPTFKCP LCQESNFTRQ RLLDHCNSNH LFQIVPTCP ICVSLPWGDP SQITRNFVSH LNQRHQFDYG EFNVLQLDEE TQYQTAVEES FQVNI
Cross-Reactivity:	Human
Characteristics:	Antibody reactive against mammalian transfected lysate.

Target Details

Target:	RNF138
---------	--------

Target Details

Alternative Name:	RNF138 (RNF138 Products)
Background:	Full Gene Name: ring finger protein 138 Synonyms: HSD-4,MGC8758,NARF,STRIN
Gene ID:	51444
NCBI Accession:	NM_016271

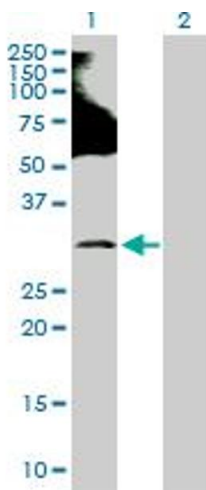
Application Details

Application Notes:	Optimal working dilution should be determined by the investigator.
Restrictions:	For Research Use only

Handling

Buffer:	In 1x PBS, pH 7.4
Handling Advice:	Aliquot to avoid repeated freezing and thawing.
Storage:	-20 °C
Storage Comment:	Store at -20°C or lower. Aliquot to avoid repeated freezing and thawing.

Images



Western Blotting

Image 1. Western Blot analysis of RNF138 expression in transfected 293T cell line by RNF138 MaxPab polyclonal antibody.

Lane 1: RNF138 transfected lysate(28.20 KDa).

Lane 2: Non-transfected lysate.