



[Go to Product page](#)

Datasheet for ABIN526736  
**anti-PRRX2 antibody (AA 151-253)**

3 Images

Overview

Quantity:	100 µg
Target:	PRRX2
Binding Specificity:	AA 151-253
Reactivity:	Human
Host:	Mouse
Clonality:	Monoclonal
Conjugate:	This PRRX2 antibody is un-conjugated
Application:	Western Blotting (WB), ELISA

Product Details

Purpose:	Mouse monoclonal antibody raised against a partial recombinant PRRX2.
Immunogen:	PRRX2 (NP_057391.1, 151 a.a. ~ 253 a.a) partial recombinant protein with GST tag. MW of the GST tag alone is 26 KDa.
Sequence:	WFQNRRAKFR RNERAMLASR SASLLKSYSQ EAAIEQPVAP RPTALSPDYL SWTASSPYST VPPYSPGSSG PATPGVNMN SIASLRLKAK EFSLHHSQVP TVN
Clone:	4C9
Isotype:	IgG2b
Cross-Reactivity:	Human
Characteristics:	Antibody Reactive Against Recombinant Protein.

## Target Details

Target:	PRRX2
Alternative Name:	PRRX2 ( <a href="#">PRRX2 Products</a> )
Background:	Full Gene Name: paired related homeobox 2 Synonyms: MGC19843,PMX2,PRX2
Gene ID:	51450
NCBI Accession:	<a href="#">NM_016307</a>

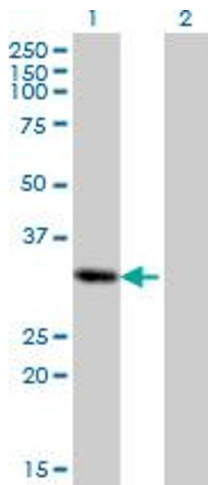
## Application Details

Application Notes:	Optimal working dilution should be determined by the investigator.
Restrictions:	For Research Use only

## Handling

Buffer:	In 1x PBS, pH 7.4
Handling Advice:	Aliquot to avoid repeated freezing and thawing.
Storage:	-20 °C
Storage Comment:	Store at -20°C or lower. Aliquot to avoid repeated freezing and thawing.

## Images

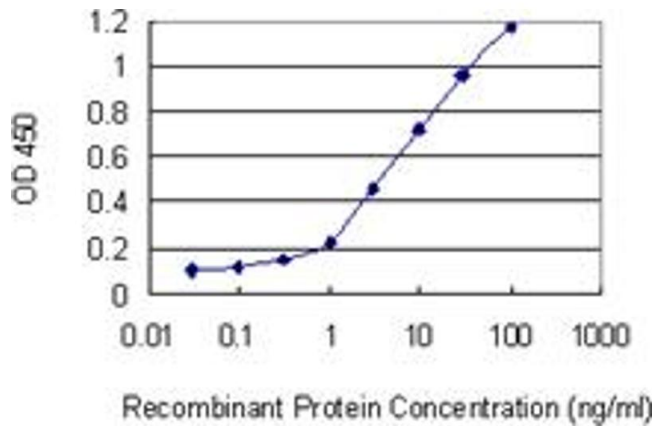


### Western Blotting

**Image 1.** Western Blot analysis of PRRX2 expression in transfected 293T cell line by PRRX2 monoclonal antibody (M01), clone 4C9.

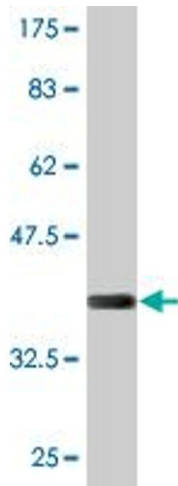
Lane 1: PRRX2 transfected lysate(27.1 kDa).

Lane 2: Non-transfected lysate.



### ELISA

**Image 2.** Detection limit for recombinant GST tagged PRRX2 is 0.1 ng/ml as a capture antibody.



### Western Blotting

**Image 3.** Western Blot detection against Immunogen (37.07 kDa).