



[Go to Product page](#)

Datasheet for ABIN526737

## anti-LCMT1 antibody (AA 1-334)

### 2 Images

#### Overview

Quantity:	50 µg
Target:	LCMT1
Binding Specificity:	AA 1-334
Reactivity:	Human
Host:	Mouse
Clonality:	Polyclonal
Conjugate:	This LCMT1 antibody is un-conjugated
Application:	Western Blotting (WB)

#### Product Details

Purpose:	Mouse polyclonal antibody raised against a full-length human LCMT1 protein.
Immunogen:	LCMT1 (NP_057393.2, 1 a.a. ~ 334 a.a) full-length human protein.
Sequence:	MATRQRESSI TSCCSTSSCD ADDEGVRGTC EDASLCKRFA VSIGYWHDPY IQHFVRLSKE RKAPEINRGY FARVHGVSQI IKAFLRKTEC HCQIVNLGAG MDTTFWRLKD EDLLPSKYFE VDFPMIVTRK LHSIKCKPPL SSPILELHSE DTLQMDGHIL DSKRYAVIGA DLRDLSELEE KLKCKNMNTQ LPTLLIAECV LVYMTPEQSA NLLKWAANSF ERAMFINYEQ VNMGDRFGQI MIENLRRRQC DLAGVETCKS LESQKERLLS NGWETASAVD MMELYNRLPR AEVSRIESLE FLDEMELLEQ LMRHYCLCWA TKGGNELGLK EITY
Cross-Reactivity:	Human
Characteristics:	Antibody reactive against mammalian transfected lysate.

## Target Details

Target:	LCMT1
Alternative Name:	LCMT1 ( <a href="#">LCMT1 Products</a> )
Background:	Full Gene Name: leucine carboxyl methyltransferase 1 Synonyms: CGI-68,LCMT,PPMT1
Gene ID:	51451
NCBI Accession:	<a href="#">NM_016309</a>

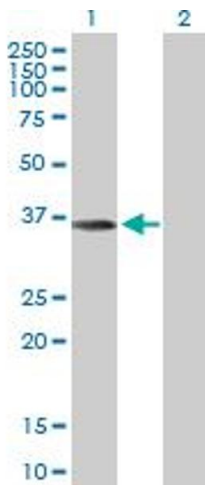
## Application Details

Application Notes:	Optimal working dilution should be determined by the investigator.
Restrictions:	For Research Use only

## Handling

Buffer:	In 1x PBS, pH 7.4
Handling Advice:	Aliquot to avoid repeated freezing and thawing.
Storage:	-20 °C
Storage Comment:	Store at -20°C or lower. Aliquot to avoid repeated freezing and thawing.

## Images

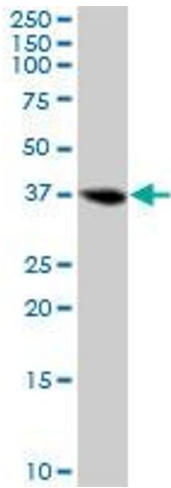


### Western Blotting

**Image 1.** Western Blot analysis of LCMT1 expression in transfected 293T cell line by LCMT1 MaxPab polyclonal antibody.

Lane 1: LCMT1 transfected lysate(36.74 KDa).

Lane 2: Non-transfected lysate.



### Western Blotting

**Image 2.** LCMT1 MaxPab polyclonal antibody. Western Blot analysis of LCMT1 expression in human kidney.