



[Go to Product page](#)

Datasheet for ABIN526820
anti-GDE1 antibody (AA 31-138)

1 Image

Overview

Quantity:	50 µL
Target:	GDE1
Binding Specificity:	AA 31-138
Reactivity:	Human
Host:	Mouse
Clonality:	Polyclonal
Conjugate:	This GDE1 antibody is un-conjugated
Application:	Western Blotting (WB), ELISA

Product Details

Purpose:	Mouse polyclonal antibody raised against a partial recombinant MIR16.
Immunogen:	MIR16 (NP_057725, 31 a.a. ~ 138 a.a) partial recombinant protein with GST tag.
Sequence:	ACLLTGSLFV LLRVFSFEPV PSCRALQVLK PRDRISAIAH RGGSHDAPEN TLAAIRQAAK NGATGVELDI EFTSDGIPVL MHDNTVDRTT DGTGRLCDLT FEQIRKLN
Cross-Reactivity:	Human
Characteristics:	Antibody Reactive Against Recombinant Protein.

Target Details

Target:	GDE1
Alternative Name:	GDE1 (GDE1 Products)

Target Details

Background:	Full Gene Name: glycerophosphodiester phosphodiesterase 1 Synonyms: 363E6.2,MIR16
Gene ID:	51573
NCBI Accession:	NM_016641

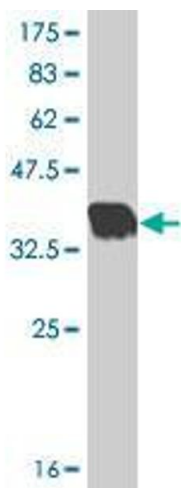
Application Details

Application Notes:	Optimal working dilution should be determined by the investigator.
Restrictions:	For Research Use only

Handling

Format:	Liquid
Buffer:	50 % glycerol
Handling Advice:	Aliquot to avoid repeated freezing and thawing.
Storage:	-20 °C
Storage Comment:	Store at -20°C or lower. Aliquot to avoid repeated freezing and thawing.

Images



Western Blotting

Image 1. Western Blot detection against Immunogen (37.99 KDa) .