



[Go to Product page](#)

Datasheet for ABIN526840
anti-MRPL48 antibody (AA 1-212)

1 Image

Overview

Quantity:	100 µg
Target:	MRPL48
Binding Specificity:	AA 1-212
Reactivity:	Human
Host:	Mouse
Clonality:	Monoclonal
Conjugate:	This MRPL48 antibody is un-conjugated
Application:	ELISA

Product Details

Purpose:	Mouse monoclonal antibody raised against a full-length recombinant MRPL48.
Immunogen:	MRPL48 (AAH09764, 1 a.a. ~ 212 a.a) full-length recombinant protein with GST tag. MW of the GST tag alone is 26 KDa.
Sequence:	MSGTLGKVLCLRNNTIFKQAFSLRFRFTSGEKPIYSVGGILLISIRPYKTKPTHGIGKYK HLIKAEEPCKKKGKVEVRAI NLGTDYEYGV LNIHLTAYDM TLAESYAQYV HNL CNSLSIK VEESYAMPTK TIEVLQLQDQ GSKMLLD SVL THERVVQIS GLSATFAEIF LEIIQSSLPE GVRLSVKEHT EEDFKGRFKA RPELEELLAK LK
Clone:	1H8
Isotype:	IgG2a
Cross-Reactivity:	Human

Product Details

Characteristics: Antibody Reactive Against Recombinant Protein.

Target Details

Target: MRPL48

Alternative Name: MRPL48 ([MRPL48 Products](#))

Background: Full Gene Name: mitochondrial ribosomal protein L48
Synonyms: CGI-118,FLJ17047,FLJ99260,HSPC290,L48MT,MGC13323,MRP-L48

Gene ID: 51642

Application Details

Application Notes: Optimal working dilution should be determined by the investigator.

Restrictions: For Research Use only

Handling

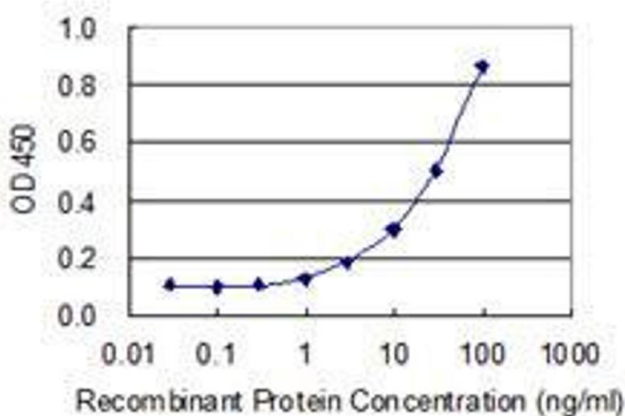
Buffer: In 1x PBS, pH 7.4

Handling Advice: Aliquot to avoid repeated freezing and thawing.

Storage: -20 °C

Storage Comment: Store at -20°C or lower. Aliquot to avoid repeated freezing and thawing.

Images



ELISA

Image 1. Detection limit for recombinant GST tagged MRPL48 is 0.3 ng/ml as a capture antibody.