



[Go to Product page](#)

Datasheet for ABIN526851
anti-GINS2 antibody (AA 1-100)

3 Images

Overview

Quantity:	100 µg
Target:	GINS2
Binding Specificity:	AA 1-100
Reactivity:	Human
Host:	Mouse
Clonality:	Monoclonal
Conjugate:	This GINS2 antibody is un-conjugated
Application:	ELISA, Western Blotting (WB)

Product Details

Purpose:	Mouse monoclonal antibody raised against a partial recombinant GINS2.
Immunogen:	GINS2 (AAH03186, 1 a.a. ~ 100 a.a) partial recombinant protein with GST tag. MW of the GST tag alone is 26 KDa.
Sequence:	MDAAEVEFLA EKELVTIIPN FSLDKIYLIG GDLGPFNPGL PVEVPLWLAI NLKQRQKCRL LPPEWMDVEK LEKMRDHERK EETFTPMPSP YYMELTKLLL
Clone:	3H4
Isotype:	IgG2b
Cross-Reactivity:	Human
Characteristics:	Antibody Reactive Against Recombinant Protein.

Target Details

Target:	GINS2
Alternative Name:	GINS2 (GINS2 Products)
Background:	Full Gene Name: GINS complex subunit 2 (Psf2 homolog) Synonyms: HSPC037,PSF2,Pfs2
Gene ID:	51659
Pathways:	DNA Replication , Synthesis of DNA

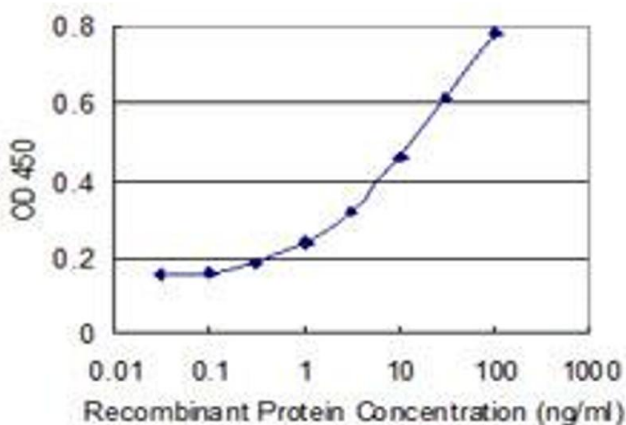
Application Details

Application Notes:	Optimal working dilution should be determined by the investigator.
Restrictions:	For Research Use only

Handling

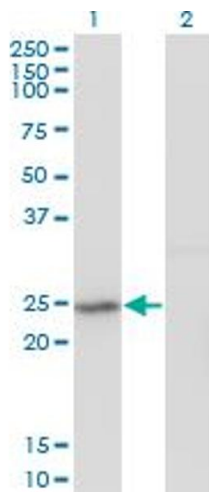
Buffer:	In 1x PBS, pH 7.4
Handling Advice:	Aliquot to avoid repeated freezing and thawing.
Storage:	-20 °C
Storage Comment:	Store at -20°C or lower. Aliquot to avoid repeated freezing and thawing.

Images



ELISA

Image 1. Detection limit for recombinant GST tagged GINS2 is 0.1 ng/ml as a capture antibody.

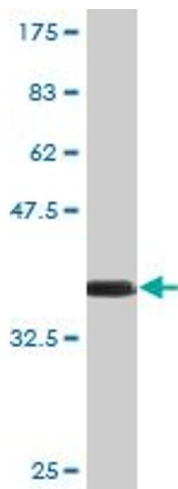


Western Blotting

Image 2. Western Blot analysis of GINS2 expression in transfected 293T cell line by Pfs2 monoclonal antibody (M02), clone 3H4.

Lane 1: GINS2 transfected lysate (Predicted MW: 21.4 kDa).

Lane 2: Non-transfected lysate.



Western Blotting

Image 3. Western Blot detection against Immunogen (36.63 kDa).