



[Go to Product page](#)

Datasheet for ABIN526910
anti-Ghrelin antibody (AA 24-117)

2 Images

Overview

Quantity:	100 µg
Target:	Ghrelin (GHRL)
Binding Specificity:	AA 24-117
Reactivity:	Human
Host:	Mouse
Clonality:	Monoclonal
Conjugate:	This Ghrelin antibody is un-conjugated
Application:	Western Blotting (WB), ELISA

Product Details

Purpose:	Mouse monoclonal antibody raised against a full length recombinant GHRL.
Immunogen:	GHRL (NP_057446, 24 a.a. ~ 117 a.a) full length recombinant protein.
Sequence:	GSSFLSPEHQ RVQQRKESKK PPAKLQPRAL AGWLRPEDGG QAEGAEDELE VRFNAPFDVG IKLSGVQYQQ HSQALGKFLQ DILWEEAKEA PADK
Clone:	2F2
Isotype:	IgG2a
Cross-Reactivity:	Human
Characteristics:	Antibody Reactive Against Recombinant Protein.

Target Details

Target:	Ghrelin (GHRL)
Alternative Name:	GHRL (GHRL Products)
Background:	Full Gene Name: ghrelin/obestatin prepropeptide Synonyms: MTLRP,obestatin
Gene ID:	51738
NCBI Accession:	NM_016362
Pathways:	Positive Regulation of Peptide Hormone Secretion , Hormone Transport , Peptide Hormone Metabolism , Negative Regulation of Hormone Secretion , Synaptic Membrane , Feeding Behaviour

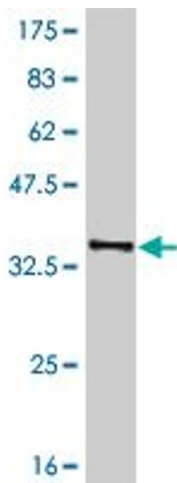
Application Details

Application Notes:	Optimal working dilution should be determined by the investigator.
Restrictions:	For Research Use only

Handling

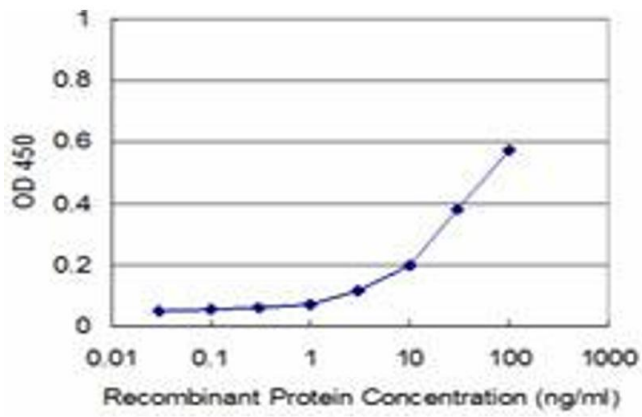
Buffer:	In 1x PBS, pH 7.4
Handling Advice:	Aliquot to avoid repeated freezing and thawing.
Storage:	-20 °C
Storage Comment:	Store at -20°C or lower. Aliquot to avoid repeated freezing and thawing.

Images



Western Blotting

Image 1. Western Blot detection against Immunogen (36.45 KDa) .



ELISA

Image 2. Detection limit for recombinant GST tagged GHRL is approximately 3ng/ml as a capture antibody.