



[Go to Product page](#)

Datasheet for ABIN526951  
**anti-BTBD1 antibody (AA 1-482)**

1 Image

Overview

Quantity:	50 µg
Target:	BTBD1
Binding Specificity:	AA 1-482
Reactivity:	Human
Host:	Mouse
Clonality:	Polyclonal
Conjugate:	This BTBD1 antibody is un-conjugated
Application:	Western Blotting (WB)

Product Details

Purpose:	Mouse polyclonal antibody raised against a full-length human BTBD1 protein.
Immunogen:	BTBD1 (NP_079514.1, 1 a.a. ~ 482 a.a) full-length human protein.
Sequence:	MASLGPAAG EQASGAEAP GPAGPPPPPS PSSLGPLLPL QREPLYNWQA TKASLKERFA FLFNSELLSD VRFVLGKGRG AAAAGGPQRI PAHRFVLAAG SAVFDAMFNG GMATTSAEIE LPDVEPAAFL ALLRFLYSDE VQIGPETVMT TLYTAKKYAV PALEAHCVEF LTKHLRADNA FMLLTQARLF DEPQLASLCL DTIDKSTMDA ISAEGFTDID IDTLCAVLER DTLSIRESRL FGAVRWAEA ECQRQLPVT FGNKQKVLGK ALSLIRFPLM TIEEFAAGPA QSGILSDREV VNLFLHFTVN PKPRVEYIDR PRCCLRGKEC CINRFQQVES RWGYSGTSDR IRFTVNRIS IVGFGLYGSI HGPTDYQVNI QIIEYEKKQT LGQNDTGFSC DGTANTFRVM FKEPIEILPN VCYTACATLK GPDSHYGTKG LKKVVHETPA ASKTVFFFFS SPGNNGTSSI EDGQIPEIIF YT
Cross-Reactivity:	Human

## Product Details

Characteristics: Antibody reactive against mammalian transfected lysate.

## Target Details

Target: BTBD1

Alternative Name: BTBD1 ([BTBD1 Products](#))

Background: Full Gene Name: BTB (POZ) domain containing 1  
Synonyms: C15orf1,NS5ATP8

Gene ID: 53339

NCBI Accession: [NM\\_025238](#)

## Application Details

Application Notes: Optimal working dilution should be determined by the investigator.

Restrictions: For Research Use only

## Handling

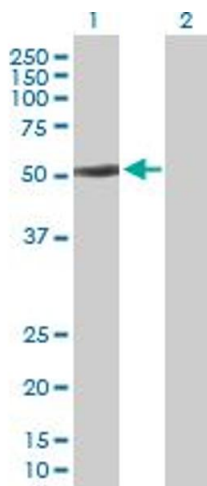
Buffer: In 1x PBS, pH 7.4

Handling Advice: Aliquot to avoid repeated freezing and thawing.

Storage: -20 °C

Storage Comment: Store at -20°C or lower. Aliquot to avoid repeated freezing and thawing.

## Images



### Western Blotting

**Image 1.** Western Blot analysis of BTBD1 expression in transfected 293T cell line by BTBD1 MaxPab polyclonal antibody.

Lane 1: BTBD1 transfected lysate(53.02 KDa).

Lane 2: Non-transfected lysate.