

Datasheet for ABIN527029
anti-CHRAC1 antibody (AA 1-131)



[Go to Product page](#)

2 Images

Overview

| | |
|----------------------|---------------------------------------|
| Quantity: | 100 µg |
| Target: | CHRAC1 |
| Binding Specificity: | AA 1-131 |
| Reactivity: | Human |
| Host: | Mouse |
| Clonality: | Monoclonal |
| Conjugate: | This CHRAC1 antibody is un-conjugated |
| Application: | Western Blotting (WB), ELISA |

Product Details

| | |
|-------------------|---|
| Purpose: | Mouse monoclonal antibody raised against a full length recombinant CHRAC1. |
| Immunogen: | CHRAC1 (AAH15891, 1 a.a. ~ 131 a.a) full-length recombinant protein with GST tag. MW of the GST tag alone is 26 KDa. |
| Sequence: | MADVVGKDK GGEQLRISLP LSRIRVIMKS SPEVSSINQE ALVLTAKATE LRVQCLATYS YRHGSGKEKK VLTYSDLANT AQQSETFQFL ADILPKKILA SKYKMLKEE KREDEENDN DNESDHDEAD S |
| Clone: | 4B8 |
| Isotype: | IgG2a |
| Cross-Reactivity: | Human |
| Characteristics: | Antibody Reactive Against Recombinant Protein. |

Target Details

| | |
|-------------------|--|
| Target: | CHRAC1 |
| Alternative Name: | CHRAC1 (CHRAC1 Products) |
| Background: | Full Gene Name: chromatin accessibility complex 1 Synonyms: CHARC1,CHARC15,CHRAC15,YCL1 |
| Gene ID: | 54108 |

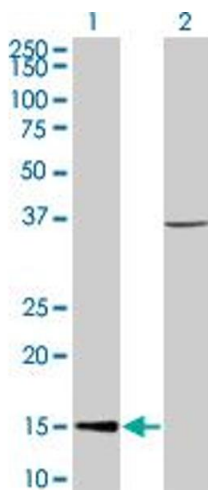
Application Details

| | |
|--------------------|--|
| Application Notes: | Optimal working dilution should be determined by the investigator. |
| Restrictions: | For Research Use only |

Handling

| | |
|------------------|--|
| Buffer: | In 1x PBS, pH 7.4 |
| Handling Advice: | Aliquot to avoid repeated freezing and thawing. |
| Storage: | -20 °C |
| Storage Comment: | Store at -20°C or lower. Aliquot to avoid repeated freezing and thawing. |

Images

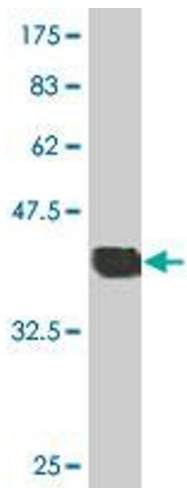


Western Blotting

Image 1. Western Blot analysis of CHRAC1 expression in transfected 293T cell line by CHRAC1 monoclonal antibody (M05), clone 4B8.

Lane 1: CHRAC1 transfected lysate(14.7 KDa).

Lane 2: Non-transfected lysate.



Western Blotting

Image 2. Western Blot detection against Immunogen (40.15 kDa).