



Datasheet for ABIN527056  
**anti-SIAE antibody (AA 1-523)**



[Go to Product page](#)

2 Images

Overview

Quantity:	50 µg
Target:	SIAE
Binding Specificity:	AA 1-523
Reactivity:	Human
Host:	Mouse
Clonality:	Polyclonal
Conjugate:	This SIAE antibody is un-conjugated
Application:	Western Blotting (WB)

Product Details

Purpose:	Mouse polyclonal antibody raised against a full-length human SIAE protein.
Immunogen:	SIAE (NP_733746.1, 1 a.a. ~ 523 a.a) full-length human protein.
Sequence:	MVAPGLVLGL VLPLILWADR SAGIGFRFAS YINNDMVLQK EPAGAVIWGF GTPGATVTVT LRQGQETIMK KVTSVKAHSD TWMVLDPMK PGGPFVMAQ QTLEKINFTL RVHDLVFGDV WLCSGQSNMQ MTVLQIFNAT RELSNTAAYQ SVRILSVSPI QAEQELEDLV AVDLQWSKPT SENLGHGYFK YMSAVCWLFGRH RHYDYLQYP IGLIASSWGG TPIEAWSSGR SLKACGVPKQ GSIPLYDSVTG PSKHSVLWNA MIHPLCNMTL KGVVWYQGES NINYNTDLYN CTFPALIEDW RETFHRGSQG QTERFFPFGL VQLSSDLSKK SSDDGFQIR WHQTADFGYV PNPKMPNTFM AVAMDLCDRD SPFGSIHPRD KQTVAYRLHL GARALAYGEK NLTFEGPLPE KIELLAHKGL LNLTYQQIQ VQKKDNKIFE ISCCSDHRCK WLPASMNTVS TQSLTLAIDS CHGTVALRY AWTTWPCEYK QCPLYHPSSA LPAPPFIIFI TDQGPQHQS N VAK

## Product Details

---

Cross-Reactivity:	Human
Characteristics:	Antibody reactive against mammalian transfected lysate.

## Target Details

---

Target:	SIAE
Alternative Name:	SIAE ( <a href="#">SIAE Products</a> )
Background:	Full Gene Name: sialic acid acetyltransferase Synonyms: CSE-C,LSE,MGC87009,YSG2
Gene ID:	54414
NCBI Accession:	<a href="#">NM_170601</a>

## Application Details

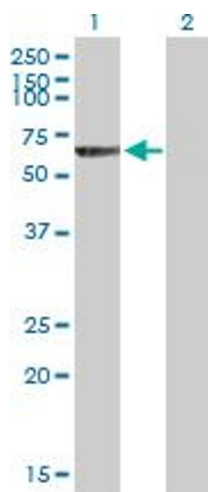
---

Application Notes:	Optimal working dilution should be determined by the investigator.
Restrictions:	For Research Use only

## Handling

---

Buffer:	In 1x PBS, pH 7.4
Handling Advice:	Aliquot to avoid repeated freezing and thawing.
Storage:	-20 °C
Storage Comment:	Store at -20°C or lower. Aliquot to avoid repeated freezing and thawing.

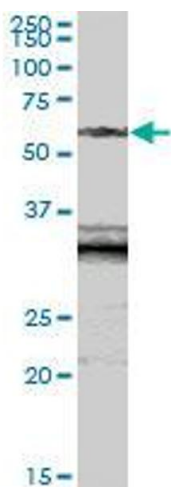


#### Western Blotting

**Image 1.** Western Blot analysis of SIAE expression in transfected 293T cell line by SIAE MaxPab polyclonal antibody.

Lane1:SIAE transfected lysate(57.53 KDa).

Lane2:Non-transfected lysate.



#### Western Blotting

**Image 2.** SIAE MaxPab polyclonal antibody. Western Blot analysis of SIAE expression in human colon.