

Datasheet for ABIN527097  
**anti-RhoF antibody (AA 1-170)**[Go to Product page](#)

## 1 Image

## Overview

Quantity:	50 µg
Target:	RhoF (RHOF)
Binding Specificity:	AA 1-170
Reactivity:	Human
Host:	Mouse
Clonality:	Polyclonal
Conjugate:	This RhoF antibody is un-conjugated
Application:	Western Blotting (WB)

## Product Details

Purpose:	Mouse polyclonal antibody raised against a full-length human RHOF protein.
Immunogen:	RHOF (AAH18208.1, 1 a.a. ~ 170 a.a) full-length human protein.
Sequence:	MDAPGALAQT AAPGPGRKEL KIVIVGDGGC GKTSLLMVYS QGSFPEHYAP SVFEKYTASV TVGSKEVTLN LYDTAGQEDY DRLRPLSYQN THLVLCYDV MNPTSVDNVL IKWFPEVTHF CRGIPMVLIG CKTDLRKDKE QLRKLRAAQL EPITYMQVGR GQDPGAQPWL
Cross-Reactivity:	Human
Characteristics:	Antibody reactive against mammalian transfected lysate.

## Target Details

Target:	RhoF (RHOF)
---------	-------------

## Target Details

Alternative Name:	RHOF ( <a href="#">RHOF Products</a> )
Background:	Full Gene Name: ras homolog gene family, member F (in filopodia) Synonyms: ARHF,FLJ20247,RIF
Gene ID:	54509

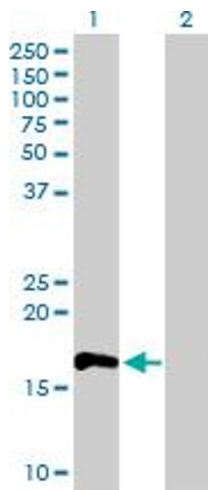
## Application Details

Application Notes:	Optimal working dilution should be determined by the investigator.
Restrictions:	For Research Use only

## Handling

Buffer:	In 1x PBS, pH 7.4
Handling Advice:	Aliquot to avoid repeated freezing and thawing.
Storage:	-20 °C
Storage Comment:	Store at -20°C or lower. Aliquot to avoid repeated freezing and thawing.

## Images



### Western Blotting

**Image 1.** Western Blot analysis of RHOF expression in transfected 293T cell line by RHOF MaxPab polyclonal antibody.

Lane 1: RHOF transfected lysate(18.7 KDa).

Lane 2: Non-transfected lysate.