



[Go to Product page](#)

Datasheet for ABIN527124  
**anti-LZTFL1 antibody (AA 200-299)**

2 Images

Overview

Quantity:	50 µL
Target:	LZTFL1
Binding Specificity:	AA 200-299
Reactivity:	Human
Host:	Mouse
Clonality:	Polyclonal
Conjugate:	This LZTFL1 antibody is un-conjugated
Application:	Western Blotting (WB), ELISA

Product Details

Purpose:	Mouse polyclonal antibody raised against a partial recombinant LZTFL1.
Immunogen:	LZTFL1 (NP_065080, 200 a.a. ~ 299 a.a) partial recombinant protein with GST tag.
Sequence:	KDFIKAQDLS NLENTVAALK SEFQKTLNDK TENQKSLEEN LATAKHDLLR VQEQLHMAEK ELEKKFQQT AAYRNMKEILT KKNDQIKDLR KRLAQYEPED
Cross-Reactivity:	Human
Characteristics:	Antibody Reactive Against Recombinant Protein.

Target Details

Target:	LZTFL1
Alternative Name:	LZTFL1 ( <a href="#">LZTFL1 Products</a> )

## Target Details

Background:	Full Gene Name: leucine zipper transcription factor-like 1 Synonyms: FLJ36386
Gene ID:	54585
NCBI Accession:	<a href="#">NM_020347</a>

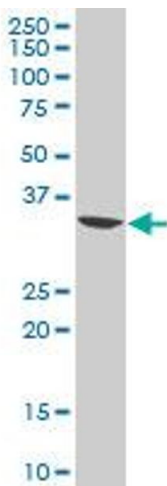
## Application Details

Application Notes:	Optimal working dilution should be determined by the investigator.
Restrictions:	For Research Use only

## Handling

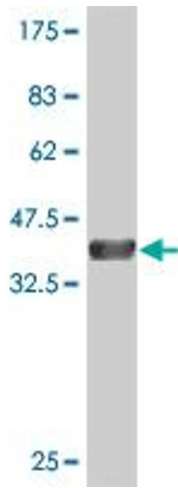
Format:	Liquid
Buffer:	50 % glycerol
Handling Advice:	Aliquot to avoid repeated freezing and thawing.
Storage:	-20 °C
Storage Comment:	Store at -20°C or lower. Aliquot to avoid repeated freezing and thawing.

## Images



### Western Blotting

**Image 1.** LZTFL1 polyclonal antibody (A01), Lot # 061130JCS1 Western Blot analysis of LZTFL1 expression in Jurkat .



### Western Blotting

**Image 2.** Western Blot detection against Immunogen (37.11 kDa).