



Datasheet for ABIN527128
anti-LZTFL1 antibody (AA 39-120)



[Go to Product page](#)

3 Images

Overview

Quantity:	100 µg
Target:	LZTFL1
Binding Specificity:	AA 39-120
Reactivity:	Human
Host:	Mouse
Clonality:	Monoclonal
Conjugate:	This LZTFL1 antibody is un-conjugated
Application:	Western Blotting (WB), ELISA, Immunoprecipitation (IP)

Product Details

Purpose:	Mouse monoclonal antibody raised against a partial recombinant LZTFL1.
Immunogen:	LZTFL1 (AAH25988.1, 39 a.a. ~ 120 a.a) partial recombinant protein with GST tag. MW of the GST tag alone is 26 KDa.
Sequence:	LKESRLVEDT FTIDEVSEVL NGLQAVVHSE VESELINTAY TNVLLLRQLF AQAQEKWYLK QTDISELENQ ELLEQVAEFE KA
Clone:	1B1
Isotype:	IgG2a
Cross-Reactivity:	Human
Characteristics:	Antibody Reactive Against Recombinant Protein.

Target Details

Target:	LZTFL1
Alternative Name:	LZTFL1 (LZTFL1 Products)
Background:	Full Gene Name: leucine zipper transcription factor-like 1 Synonyms: FLJ36386
Gene ID:	54585

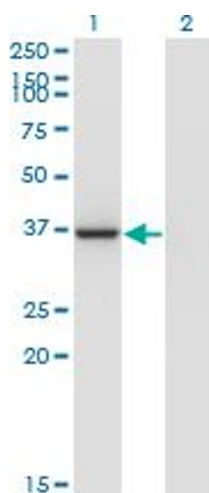
Application Details

Application Notes:	Optimal working dilution should be determined by the investigator.
Restrictions:	For Research Use only

Handling

Buffer:	In 1x PBS, pH 7.4
Handling Advice:	Aliquot to avoid repeated freezing and thawing.
Storage:	-20 °C
Storage Comment:	Store at -20°C or lower. Aliquot to avoid repeated freezing and thawing.

Images

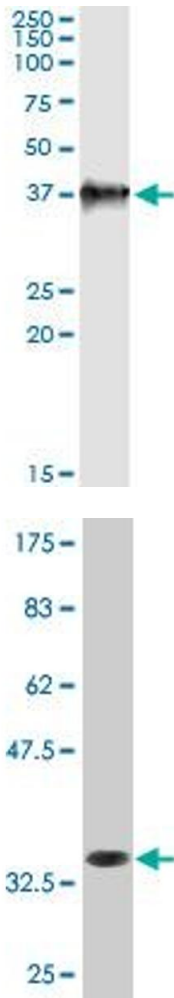


Western Blotting

Image 1. Western Blot analysis of LZTFL1 expression in transfected 293T cell line by LZTFL1 monoclonal antibody (M09), clone 1B1.

Lane 1: LZTFL1 transfected lysate(34.6 KDa).

Lane 2: Non-transfected lysate.



Immunoprecipitation

Image 2. Immunoprecipitation of LZTFL1 transfected lysate using anti-LZTFL1 monoclonal antibody and Protein A Magnetic Bead , and immunoblotted with LZTFL1 MaxPab rabbit polyclonal antibody.

Western Blotting

Image 3. Western Blot detection against Immunogen (34.65 KDa) .