



[Go to Product page](#)

Datasheet for ABIN527181  
**anti-KLHDC4 antibody (AA 1-520)**

4 Images

Overview

Quantity:	50 µg
Target:	KLHDC4
Binding Specificity:	AA 1-520
Reactivity:	Human
Host:	Mouse
Clonality:	Polyclonal
Conjugate:	This KLHDC4 antibody is un-conjugated
Application:	Western Blotting (WB), Immunofluorescence (IF)

Product Details

Purpose:	Mouse polyclonal antibody raised against a full-length human KLHDC4 protein.
Immunogen:	KLHDC4 (NP_060036.2, 1 a.a. ~ 520 a.a) full-length human protein.
Sequence:	MGKKGKKEKK GRGAEKTAAK MEKKVSKRSR KEEEDLEALI AHFQTLDAKR TQTVELPCPP PSPRLNASLS VHPEKDELIL FGGEYFNGQK TFLYNELVYV NTRKDTWTKV DIPSPPPRRC AHQAVVVPQG GGQLWVFGGE FASPNGEQFY HYKDLWVLHL ATKTWEQVKS TGGPSGRSGH RMVAWKRQLI LFGGFHESTR DYIYYNDVYA FNLDFTWSK LSPSGTGPTP RSGCQMSVTP QGGIVVYGGY SKQRVKKDVD KGTRHSDMFL LKPEDGREDK VVVTRMNPSG VKPTPRSGFS VAMAPNHQTL FFGGVCDEEE EESLSGEFFN DLYFYDATRN RWFEGQLKGP KSEKKRRRRG RKEEPEGGSR PACGGAGTQG PVQLVKEVA EDGTVVTIKV VLTAPGSAGQ PRSEEDSLE EAGSPAPGPC PRSNAMLAVK HGVLYVYGGM FEAGDRQVTL SDLHCLDLHR MEAWKALVEM DPETQEWLEE TDSEEDSEEV EGAEGGVDD EDSGEESGAED

## Product Details

---

Cross-Reactivity:	Human
Characteristics:	Antibody reactive against mammalian transfected lysate.

## Target Details

---

Target:	KLHDC4
Alternative Name:	KLHDC4 ( <a href="#">KLHDC4 Products</a> )
Background:	Full Gene Name: kelch domain containing 4 Synonyms: DKFZp434G0522,FLJ00104
Gene ID:	54758
NCBI Accession:	<a href="#">NM_017566</a>

## Application Details

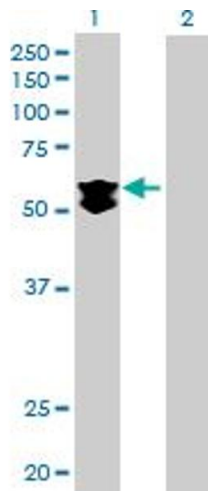
---

Application Notes:	Optimal working dilution should be determined by the investigator.
Restrictions:	For Research Use only

## Handling

---

Buffer:	In 1x PBS, pH 7.4
Handling Advice:	Aliquot to avoid repeated freezing and thawing.
Storage:	-20 °C
Storage Comment:	Store at -20°C or lower. Aliquot to avoid repeated freezing and thawing.

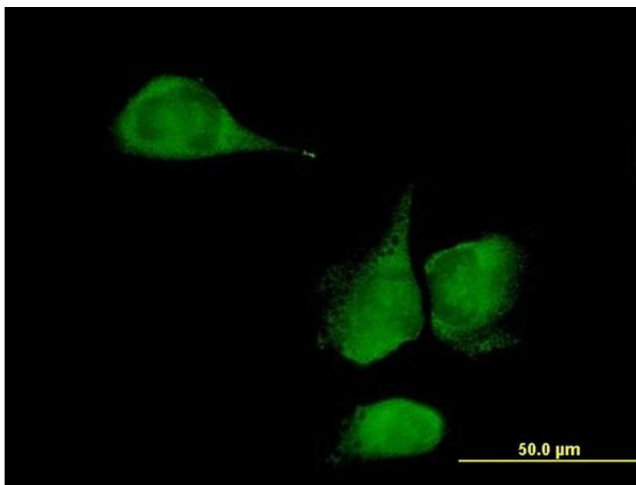


### Western Blotting

**Image 1.** Western Blot analysis of KLHDC4 expression in transfected 293T cell line by KLHDC4 MaxPab polyclonal antibody.

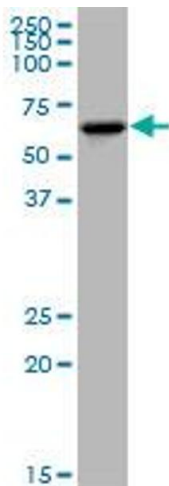
Lane 1: KLHDC4 transfected lysate(57.2 KDa).

Lane 2: Non-transfected lysate.



### Immunofluorescence

**Image 2.** Immunofluorescence of purified MaxPab antibody to KLHDC4 on HeLa cell. [antibody concentration 10 ug/ml]



### Western Blotting

**Image 3.** KLHDC4 MaxPab polyclonal antibody. Western Blot analysis of KLHDC4 expression in Jurkat.

Please check the [product details page](#) for more images. Overall 4 images are available for ABIN527181.