

Datasheet for ABIN527183
anti-KLHDC4 antibody (AA 1-463)



[Go to Product page](#)

4 Images

Overview

Quantity:	100 µg
Target:	KLHDC4
Binding Specificity:	AA 1-463
Reactivity:	Human
Host:	Mouse
Clonality:	Monoclonal
Conjugate:	This KLHDC4 antibody is un-conjugated
Application:	Western Blotting (WB), ELISA, Immunofluorescence (IF), Immunohistochemistry (Paraffin-embedded Sections) (IHC (p))

Product Details

Purpose:	Mouse monoclonal antibody raised against a full length recombinant KLHDC4.
Immunogen:	KLHDC4 (AAH01044, 1 a.a. ~ 463 a.a) full-length recombinant protein with GST tag. MW of the GST tag alone is 26 KDa.
Sequence:	<p>MGKKGKKEKK GRGAEKTAAK MEKKVSKRSR KEETFLYNEL YVYNTRKDTW TKVDIPSPPP</p> <p>RRCAHQAVVV PQGGGQLWVF GGEFASPNGE QFYHYKDLWV LHLATKTWEQ VKSTGGPSGR</p> <p>SGHRMVAWKR QLILFGGFHE STRDYIYYND VYAFNLDTFT WSKLSPSGTG PTPRSGCQMS</p> <p>VTPQGGIVVY GGYSKQRVKK DVDKGTRHSD MFLLPEDGR EDKWWVTRMN PSGVKPTPRS</p> <p>GFSVAMAPNH QTLFFGGVCD EEEEELSGE FFNDLYFYDA TRNRWFEGQL KGPKEKKKR</p> <p>RRGRKEEPEG GSRPACGGAG TQGPVQLVKE VVAEDGTVVT IKQVLTAPGS AGQPRSEDED</p> <p>SLEEAGSPAP GPCPRSNAML AVKHGVLVYVY GGMFEAGDRQ VTLSDLHCLD LHRMEAWKAL</p> <p>VENDPETQEW LEETDSEEDS EEVEGAEGGV DDEDSGEESG AED</p>

Product Details

Clone:	4G11
Isotype:	IgG2a
Cross-Reactivity:	Human
Characteristics:	Antibody Reactive Against Recombinant Protein.

Target Details

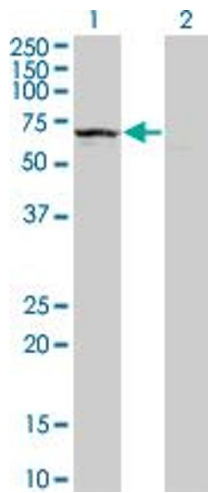
Target:	KLHDC4
Alternative Name:	KLHDC4 (KLHDC4 Products)
Background:	Full Gene Name: kelch domain containing 4 Synonyms: DKFZp434G0522,FLJ00104
Gene ID:	54758

Application Details

Application Notes:	Optimal working dilution should be determined by the investigator.
Restrictions:	For Research Use only

Handling

Buffer:	In 1x PBS, pH 7.4
Handling Advice:	Aliquot to avoid repeated freezing and thawing.
Storage:	-20 °C
Storage Comment:	Store at -20°C or lower. Aliquot to avoid repeated freezing and thawing.

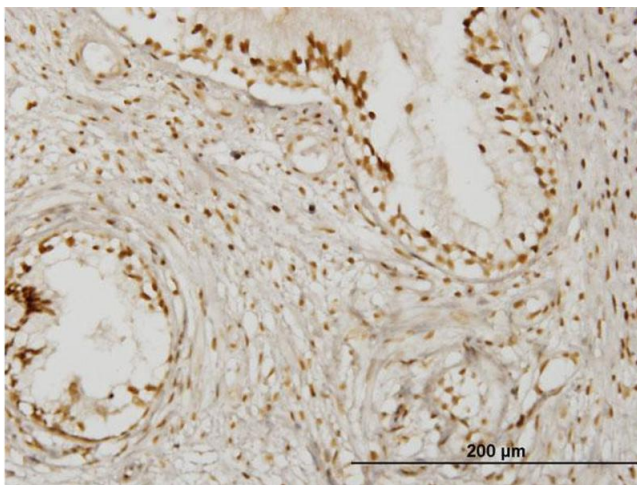


Western Blotting

Image 1. Western Blot analysis of KLHDC4 expression in transfected 293T cell line by KLHDC4 monoclonal antibody (M02), clone 4G11.

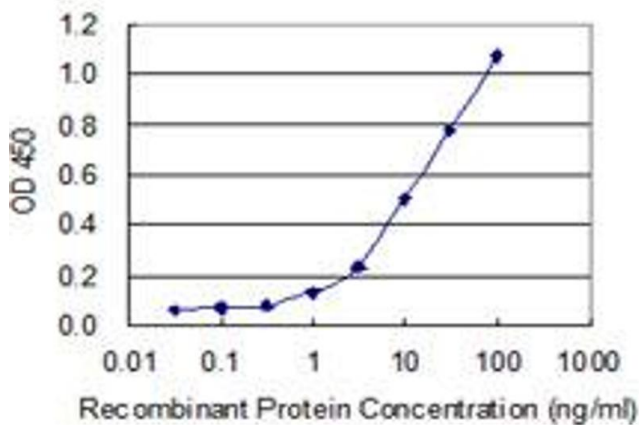
Lane 1: KLHDC4 transfected lysate(57.9 kDa).

Lane 2: Non-transfected lysate.



Immunostaining

Image 2. Immunoperoxidase of monoclonal antibody to KLHDC4 on formalin-fixed paraffin-embedded human prostate. [antibody concentration 1.5 ug/ml]



ELISA

Image 3. Detection limit for recombinant GST tagged KLHDC4 is 0.3 ng/ml as a capture antibody.

Please check the [product details page](#) for more images. Overall 4 images are available for ABIN527183.