



Datasheet for ABIN527218  
**anti-GDPD2 antibody (AA 1-539)**



[Go to Product page](#)

1 Image

Overview

Quantity:	50 µg
Target:	GDPD2
Binding Specificity:	AA 1-539
Reactivity:	Human
Host:	Mouse
Clonality:	Polyclonal
Conjugate:	This GDPD2 antibody is un-conjugated
Application:	Western Blotting (WB)

Product Details

Purpose:	Mouse polyclonal antibody raised against a full-length human GDPD2 protein.
Immunogen:	GDPD2 (NP_060181.2, 1 a.a. ~ 539 a.a) full-length human protein.
Sequence:	MAESPGCCSV WARCLHCLYS CHWRKCPRE R MQTSKDCDIW FGLLFLTFL SLSWLYIGLV LLNDLHNFNE FLRRWGHWM DWSLAFLLVI SLLVTYASLL LVLALLRLC RQPLHLHSLH KVLLLLIMLL VAAGLVGLDI QWQQEWHSR VSLQATAPFL HIGAAAGIAL LAWPVADTFY RIHRRGPKIL LLLLLFGVVL VIYLAPLCIS SPCIMEPRDL PPKPGLVGHR GAPMLAPENT LMSLRKTAEC GATVFETDVM VSSDGV PFLM HDEHLSRTTN VASVFPTRIT AHSSDFSWTE LKRLNAGSWF LERRPFWGAK PLAGPDQKEA ESQTVPALEE LLEEAAALNL SIMFDLRRPP QNHTYYDTFV IQTLETV LNA RVPQAMVFWL PDED RANVQR RAPGMRQIYG RQGGNRTERP QFLNLPYQDL PLLDIKALHK DNVS VNL FVV NKPWLF SLLW CAGVDSVT TN DCQLLQQMRY PIWLITPQTY LIIWVITNCV STM LLLW TFL LQRRFVKKRG KTGLETAVLL TRINNFMM E

## Product Details

---

Cross-Reactivity:	Human
Characteristics:	Antibody reactive against mammalian transfected lysate.

## Target Details

---

Target:	GDPD2
Alternative Name:	GDPD2 ( <a href="#">GDPD2 Products</a> )
Background:	Full Gene Name: glycerophosphodiester phosphodiesterase domain containing 2 Synonyms: FLJ20207,GDE3,OBDPF
Gene ID:	54857
NCBI Accession:	<a href="#">NM_017711</a>

## Application Details

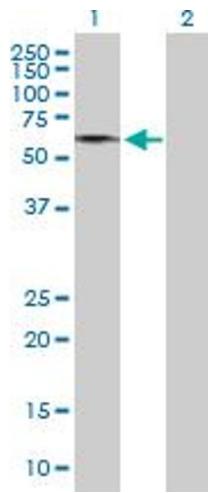
---

Application Notes:	Optimal working dilution should be determined by the investigator.
Restrictions:	For Research Use only

## Handling

---

Buffer:	In 1x PBS, pH 7.4
Handling Advice:	Aliquot to avoid repeated freezing and thawing.
Storage:	-20 °C
Storage Comment:	Store at -20°C or lower. Aliquot to avoid repeated freezing and thawing.



### Western Blotting

**Image 1.** Western Blot analysis of GDPD2 expression in transfected 293T cell line by GDPD2 MaxPab polyclonal antibody.

Lane1:GDPD2 transfected lysate(59.29 KDa).

Lane2:Non-transfected lysate.