



[Go to Product page](#)

Datasheet for ABIN527228

anti-EPS8-Like 1 antibody (AA 1-551)

1 Image

Overview

Quantity:	50 µg
Target:	EPS8-Like 1 (EPS8L1)
Binding Specificity:	AA 1-551
Reactivity:	Human
Host:	Mouse
Clonality:	Polyclonal
Conjugate:	This EPS8-Like 1 antibody is un-conjugated
Application:	Western Blotting (WB)

Product Details

Purpose:	Mouse polyclonal antibody raised against a full-length human EPS8L1 protein.
Immunogen:	EPS8L1 (NP_631943.1, 1 a.a. ~ 551 a.a) full-length human protein.
Sequence:	MGRKAIVLAI ANTSLAFPLC QHLVTFCLGE DDGVHTVEDA SRKLAVMDSQ GRVWAQEMLL RVSPDHVTLL DPASKEELES YPLGAIVRCD AVMPGGRSRS LLLLVCQEPE RAQPDVHFFQ GLRLGAEILIR EDIQGALHNY RSGRGERRAA ALRATQEELQ RDRSPAETP PLQRRPSVRA VISTVERGAG RGRPQAKPIP EAEAAQRPEP VGTSSNADSA SPDLGPRGPD LAVLQAEREV DILNHVFDDV ESFVSRLQKS AEAARVLEHR ERGRRSRRRA AGEGLLTLRA KPPSEAEYTD VLQKIKYAFS LLARLRGNIA DPSSPELLHF LFGPLQMIVN TSGGPEFASS VRRPHLTSDA VALLRDNVTP RENELWTS LG DSWTRPGLLE SPEEGPPYRP EFFSGWEPPV TDPQSRRAWED PVEKQLQHER RRRQVTQATQ QGRGWVVRGR GRSWAPRLTR LSYFLQQSAP QVAVNGHRDL EPESEPQLES ETAGKWVLCN YDFQARNSS E LSVKQRDVLE VLEDKEKVSE LEAVMEKQKK KVEGEVEMEV I

Product Details

Cross-Reactivity:	Human
Characteristics:	Antibody reactive against mammalian transfected lysate.

Target Details

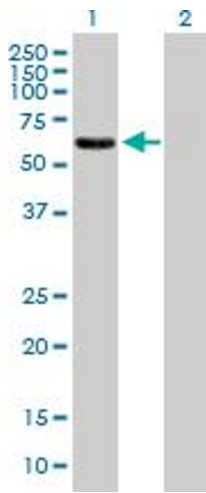
Target:	EPS8-Like 1 (EPS8L1)
Alternative Name:	EPS8L1 (EPS8L1 Products)
Background:	Full Gene Name: EPS8-like 1 Synonyms: DRC3, EPS8R1, FLJ20258, MGC23164, MGC4642, PP10566
Gene ID:	54869
NCBI Accession:	NM_139204

Application Details

Application Notes:	Optimal working dilution should be determined by the investigator.
Restrictions:	For Research Use only

Handling

Buffer:	In 1x PBS, pH 7.4
Handling Advice:	Aliquot to avoid repeated freezing and thawing.
Storage:	-20 °C
Storage Comment:	Store at -20°C or lower. Aliquot to avoid repeated freezing and thawing.



Western Blotting

Image 1. Western Blot analysis of EPS8L1 expression in transfected 293T cell line by EPS8L1 MaxPab polyclonal antibody.

Lane 1: EPS8L1 transfected lysate(60.61 KDa).

Lane 2: Non-transfected lysate.