



[Go to Product page](#)

Datasheet for ABIN527255
anti-CHCHD3 antibody (AA 1-227)

3 Images

Overview

Quantity:	50 µg
Target:	CHCHD3
Binding Specificity:	AA 1-227
Reactivity:	Human
Host:	Mouse
Clonality:	Polyclonal
Conjugate:	This CHCHD3 antibody is un-conjugated
Application:	Western Blotting (WB), Immunofluorescence (IF)

Product Details

Purpose:	Mouse polyclonal antibody raised against a full-length human CHCHD3 protein.
Immunogen:	CHCHD3 (NP_060282, 1 a.a. ~ 227 a.a) full-length human protein.
Sequence:	MGGTTSTRRV TFEADENENI TVVKGIRLSE NVIDRMKESS PSGSKSQRY S GAYGASVSDE ELKRRVAEEL ALEQAKKES E DQKRLKQAKE LDRERAAANE QLTRAILRER ICSEEERAKA KHLARQLEEK DRVLKKQDAF YKEQLARLEE RSSEFYRVTT EQYQKAAEEV EAKFKRYESH PVCADLQAKI LQCYRENT HQ TLKCSALATQ YMHCVN HAKQ SMLEKGG
Cross-Reactivity:	Human
Characteristics:	Antibody reactive against mammalian transfected lysate.

Target Details

Target:	CHCHD3
---------	--------

Target Details

Alternative Name:	CHCHD3 (CHCHD3 Products)
Background:	Full Gene Name: coiled-coil-helix-coiled-coil-helix domain containing 3 Synonyms: FLJ20420
Gene ID:	54927
NCBI Accession:	NM_017812

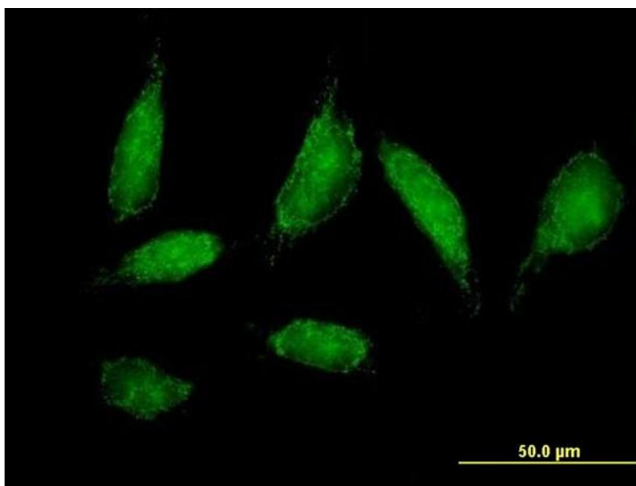
Application Details

Application Notes:	Optimal working dilution should be determined by the investigator.
Restrictions:	For Research Use only

Handling

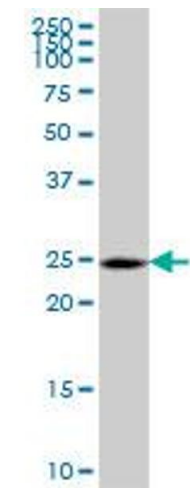
Buffer:	In 1x PBS, pH 7.4
Handling Advice:	Aliquot to avoid repeated freezing and thawing.
Storage:	-20 °C
Storage Comment:	Store at -20°C or lower. Aliquot to avoid repeated freezing and thawing.

Images



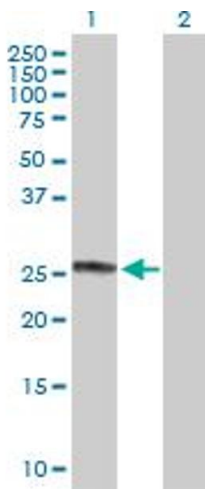
Immunofluorescence

Image 1. Immunofluorescence of purified MaxPab antibody to CHCHD3 on HeLa cell. [antibody concentration 10 ug/ml]



Western Blotting

Image 2. CHCHD3 MaxPab polyclonal antibody. Western Blot analysis of CHCHD3 expression in human placenta.



Western Blotting

Image 3. Western Blot analysis of CHCHD3 expression in transfected 293T cell line by CHCHD3 MaxPab polyclonal antibody.

Lane 1: CHCHD3 transfected lysate(24.97 KDa).

Lane 2: Non-transfected lysate.