



[Go to Product page](#)

Datasheet for ABIN527259  
**anti-RHBDL2 antibody (AA 1-72)**

2 Images

Overview

Quantity:	100 µg
Target:	RHBDL2
Binding Specificity:	AA 1-72
Reactivity:	Human
Host:	Mouse
Clonality:	Monoclonal
Conjugate:	This RHBDL2 antibody is un-conjugated
Application:	ELISA, Western Blotting (WB)

Product Details

Purpose:	Mouse monoclonal antibody raised against a partial recombinant RHBDL2.
Immunogen:	RHBDL2 (NP_060291.2, 1 a.a. ~ 72 a.a) partial recombinant protein with GST tag. MW of the GST tag alone is 26 KDa.
Sequence:	MAAVHDLEME SMNLMGREGM KEELEEEEEKM REDGGGKDRA KSKKVHRIVS KWMLPEKSRG TYLERANCFP PP
Clone:	2H1
Isotype:	IgG2b
Cross-Reactivity:	Human
Characteristics:	Antibody Reactive Against Recombinant Protein.

## Target Details

Target:	RHBDL2
Alternative Name:	RHBDL2 ( <a href="#">RHBDL2 Products</a> )
Background:	Full Gene Name: rhomboid, veinlet-like 2 (Drosophila) Synonyms: MGC16997,RRP2
Gene ID:	54933
NCBI Accession:	<a href="#">NM_017821</a>

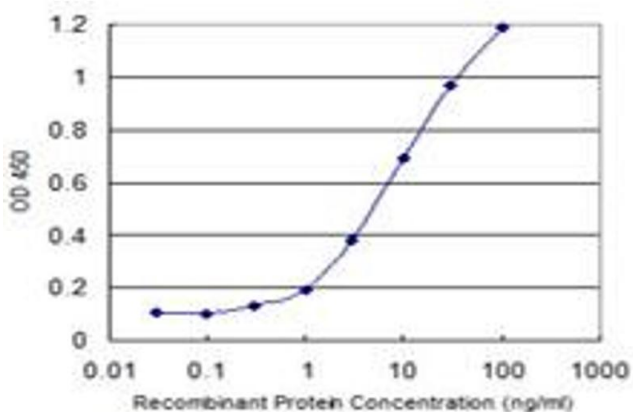
## Application Details

Application Notes:	Optimal working dilution should be determined by the investigator.
Restrictions:	For Research Use only

## Handling

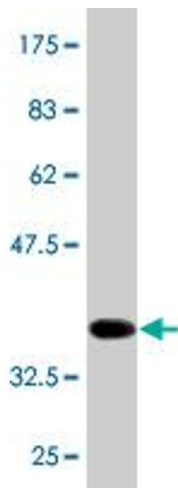
Buffer:	In 1x PBS, pH 7.4
Handling Advice:	Aliquot to avoid repeated freezing and thawing.
Storage:	-20 °C
Storage Comment:	Store at -20°C or lower. Aliquot to avoid repeated freezing and thawing.

## Images



### ELISA

**Image 1.** Detection limit for recombinant GST tagged RHBDL2 is 0.1 ng/ml as a capture antibody.



### Western Blotting

**Image 2.** Western Blot detection against Immunogen (33.66 kDa).