



[Go to Product page](#)

Datasheet for ABIN527267

## anti-C9orf6 antibody (AA 1-181)

### 3 Images

#### Overview

Quantity:	50 µg
Target:	C9orf6 (FAM206A)
Binding Specificity:	AA 1-181
Reactivity:	Human
Host:	Mouse
Clonality:	Polyclonal
Conjugate:	This C9orf6 antibody is un-conjugated
Application:	Immunofluorescence (IF), Western Blotting (WB)

#### Product Details

Purpose:	Mouse polyclonal antibody raised against a full-length human C9orf6 protein.
Immunogen:	C9orf6 (AAH15795, 1 a.a. ~ 181 a.a) full-length human protein.
Sequence:	MATEPEAAEP VVPSLVDRYF TRWYKPDVKG KFCEDHCILQ HSNRICVITL AESHPVLQSG KTIKSISYQI STNCSRLQNK VSGKFKRGAQ FLTELAPLCK IYCSDGEEYT VSSCVRGRLM EVNENILHKP SILQEKPSTE GYIAVVLPKF EESKSITEGL LTQKQYEEVM VKRINATTAT S
Cross-Reactivity:	Human
Characteristics:	Antibody reactive against mammalian transfected lysate.

#### Target Details

Target:	C9orf6 (FAM206A)
---------	------------------

## Target Details

Alternative Name:	C9orf6 ( <a href="#">FAM206A Products</a> )
Background:	Full Gene Name: chromosome 9 open reading frame 6 Synonyms: CG-8,FLJ20457
Gene ID:	54942

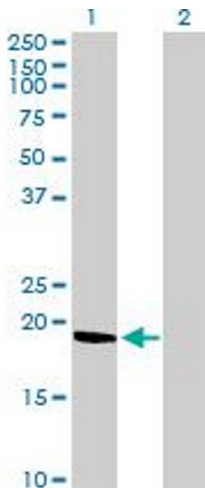
## Application Details

Application Notes:	Optimal working dilution should be determined by the investigator.
Restrictions:	For Research Use only

## Handling

Buffer:	In 1x PBS, pH 7.4
Handling Advice:	Aliquot to avoid repeated freezing and thawing.
Storage:	-20 °C
Storage Comment:	Store at -20°C or lower. Aliquot to avoid repeated freezing and thawing.

## Images

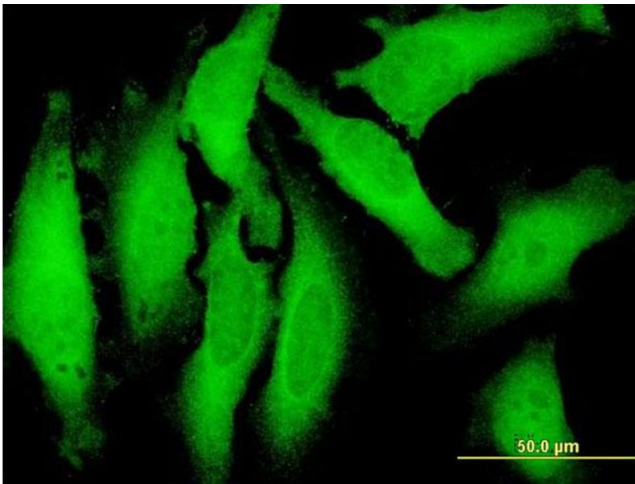


### Western Blotting

**Image 1.** Western Blot analysis of C9orf6 expression in transfected 293T cell line by C9orf6 MaxPab polyclonal antibody.

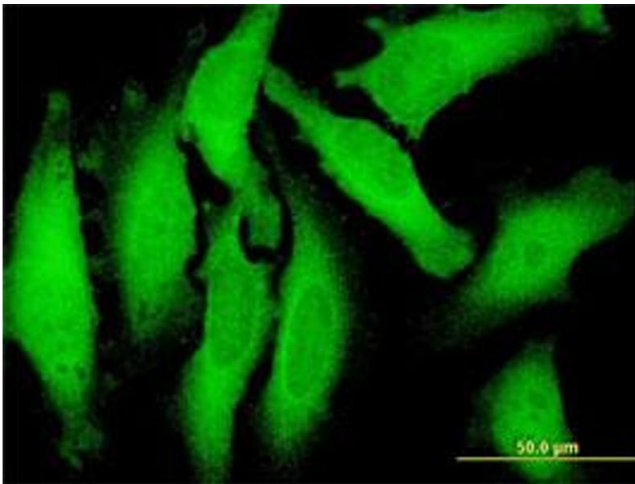
Lane 1: C9orf6 transfected lysate(20.02 KDa).

Lane 2: Non-transfected lysate.



#### Immunofluorescence

**Image 2.** Immunofluorescence of purified MaxPab antibody to C9orf6 on HeLa cell. [antibody concentration 10 µg/ml]



#### Immunofluorescence

**Image 3.** Immunofluorescence of purified MaxPab antibody to C9orf6 on HeLa cell. (antibody concentration 10 µg/mL)