



[Go to Product page](#)

Datasheet for ABIN527314
anti-CCDC40 antibody (AA 1-478)

1 Image

Overview

Quantity:	50 µL
Target:	CCDC40
Binding Specificity:	AA 1-478
Reactivity:	Human
Host:	Mouse
Clonality:	Polyclonal
Conjugate:	This CCDC40 antibody is un-conjugated
Application:	Western Blotting (WB)

Product Details

Purpose:	Mouse polyclonal antibody raised against a full-length human CCDC40 protein.
Brand:	MaxPab®
Immunogen:	CCDC40 (XP_939608.1, 1 a.a. ~ 478 a.a) full-length human protein.
Sequence:	MAEPGGAAGR SHPEDGSASE GEKEGNESH MVSPPEKDDG QKGEEAVGST EHPEEVTQA EAAIEEGEVE TEGEAAVEGE EEAVSYGDAE SEEEYYTET SSPEGQISAA DTTYPYFSP QELPGEEAYD SVSGEAGLQG FQQEATGPPE SRERRVTSPE PSHGVLGPSE QMGQVTSGPA VGRLTGSTEE PQGQVLPMPV QHRFRLSHGS DISSDLEEF VSQEPVIPPV VPDHAPREGD LPVFQDQIQ PSTEEGAMAE RVESEGSDEE AEDEGSQLVV LDPDHPLMVR FQAALKNYLN RQIEKLLDL QELVWATKQS RAQRQELGVN LYEVQQLVH LQKLEKSHD RHAMASSERR QKEEELQAAR ALYTKTCAA NEERKKLAAL QTEMENLALH LFYMQNIDQD MRDDIRVMTQ VVKKAETERI RAEIEKKKQG VGDTGAAFIP KTTQGDQVSG RGKKKPGTVV ARVSPAEL

Product Details

Cross-Reactivity: Human

Purification: purified

Target Details

Target: CCDC40

Alternative Name: CCDC40 ([CCDC40 Products](#))

Background: Full Gene Name: coiled-coil domain containing 40
Synonyms: FLJ20753,FLJ32021,KIAA1640

Gene ID: 55036

NCBI Accession: [XP_939608](#)

Application Details

Application Notes: Optimal working dilution should be determined by the investigator.

Comment: Product Quality tested by: Antibody reactive against mammalian transfected lysate.

Restrictions: For Research Use only

Handling

Format: Liquid

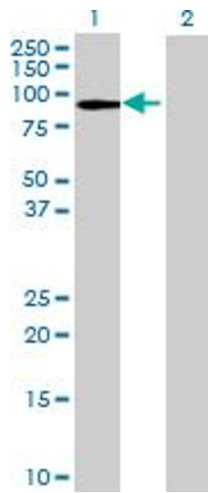
Buffer: No additive

Preservative: Without preservative

Handling Advice: Aliquot to avoid repeated freezing and thawing.

Storage: -20 °C

Storage Comment: Store at -20°C or lower. Aliquot to avoid repeated freezing and thawing.



Western Blotting

Image 1. Western Blot analysis of CCDC40 expression in transfected 293T cell line by CCDC40 MaxPab polyclonal antibody.

Lane 1: CCDC40 transfected lysate(52.58 KDa).

Lane 2: Non-transfected lysate.