

Datasheet for ABIN527320
anti-ATG16L1 antibody (AA 1-523)



[Go to Product page](#)

2 Images

Overview

Quantity:	50 µg
Target:	ATG16L1
Binding Specificity:	AA 1-523
Reactivity:	Human
Host:	Mouse
Clonality:	Polyclonal
Conjugate:	This ATG16L1 antibody is un-conjugated
Application:	Western Blotting (WB)

Product Details

Purpose:	Mouse polyclonal antibody raised against a full-length human ATG16L1 protein.
Immunogen:	ATG16L1 (NP_110430.4, 1 a.a. ~ 523 a.a) full-length human protein.
Sequence:	MAQLRIKHQE ELTELHKKRG ELAQLVIDLN NQMQRKDREM QMNEAKIAEC LQTISDLETE CLDLRRTLCD LERANQTLKD EYDALQITFT ALEGKLRKTT EENQELVTRW MAEKAQEANR LNAENKDSR RRQARLQKEL AEAAKEPLPV EQDDDIEVIV DETSDHTEET SPVRAISRAA TKRLSQPAGG LLDSITNIFG RRSVSSFPVP QDNVDTHPGS GKEVRVPATA LCVFDAHDGE VNAVQFSPGS RLLATGGMDR RVKLWEVFG EKEFKGSLSG SNAGITSIEF DSAGSYLLAA SNDFASRIWT VDDYRLRHTL TGHSGKVL SA KFLLDNARIV SGSHDRTLKL WDLRSKVCIK TVFAGSSCND IVCTEQCVMS GHFDKKIRFW DIRSESIVRE MELLGKITAL DLNPERTELL SCSRDILLKV IDLRTNAIKQ TFSAPGFKCG SDWTRVVFSP DGSYVAAGSA EGSLYIWSVL TGKVEKVL SK QHSSSINAVA WSPSGSHVVS VDKGCKAVLW AQY

Product Details

Cross-Reactivity:	Human
Characteristics:	Antibody reactive against mammalian transfected lysate.

Target Details

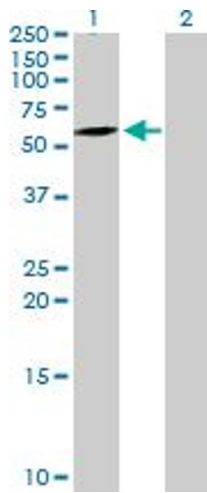
Target:	ATG16L1
Alternative Name:	ATG16L1 (ATG16L1 Products)
Background:	Full Gene Name: ATG16 autophagy related 16-like 1 (S. cerevisiae) Synonyms: APG16L,ATG16L,FLJ00045,FLJ10035,FLJ10828,FLJ22677,IBD10,WDR30
Gene ID:	55054
Pathways:	Autophagy

Application Details

Application Notes:	Optimal working dilution should be determined by the investigator.
Restrictions:	For Research Use only

Handling

Buffer:	In 1x PBS, pH 7.4
Handling Advice:	Aliquot to avoid repeated freezing and thawing.
Storage:	-20 °C
Storage Comment:	Store at -20°C or lower. Aliquot to avoid repeated freezing and thawing.

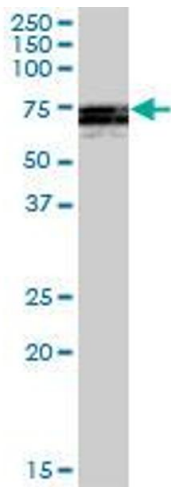


Western Blotting

Image 1. Western Blot analysis of ATG16L1 expression in transfected 293T cell line by ATG16L1 MaxPab polyclonal antibody.

Lane 1: ATG16L1 transfected lysate(57.53 kDa).

Lane 2: Non-transfected lysate.



Western Blotting

Image 2. ATG16L1 MaxPab polyclonal antibody. Western Blot analysis of ATG16L1 expression in human placenta.