



[Go to Product page](#)

Datasheet for ABIN527327  
**anti-C9orf68 antibody (AA 1-392)**

2 Images

Overview

Quantity:	50 µL
Target:	C9orf68
Binding Specificity:	AA 1-392
Reactivity:	Human
Host:	Mouse
Clonality:	Polyclonal
Conjugate:	This C9orf68 antibody is un-conjugated
Application:	Western Blotting (WB)

Product Details

Purpose:	Mouse polyclonal antibody raised against a full-length human C9orf68 protein.
Immunogen:	C9orf68 (AAH34293, 1 a.a. ~ 392 a.a) full-length human protein.
Sequence:	MPLEVVVELQ IRAISCPGVF LPGKQDVYLG VYLMNQYLET NSFPSAFPIM IQESMRFEKV FESAVDPGAV VDLLEMWDEL AYYEENTRDF LFPEPKLTIPS HPRRCREVL M KTALGFPGIA PKIEFSTRTA IRECVFLHRN RFLEERHESR RPLSTSHEPI FPLNTIKMKL RENNLRNLPK GMQARAPSQY STRHFFQDQP AQLNLGNNFK ISGGSKPPFV VRHVDSAKPF GENISEHHLR RSGRKSFSDF PFPTRRASS LDSLAANVKV IKEPDERIVL RSDSSSCLDS SQFGKSSSSK QGDADFHGKA SFATYQHSTS PGPLDQPLL RERFHPGSQST WKNIHERVCS LLTSHRAQLH QNKEDSTSEV NYIHERPSYP LKKYSLHEQR YF
Cross-Reactivity:	Human
Characteristics:	Antibody reactive against mammalian transfected lysate.

## Target Details

Target:	C9orf68
Alternative Name:	C9orf68 ( <a href="#">C9orf68 Products</a> )
Background:	Full Gene Name: chromosome 9 open reading frame 68 Synonyms: FLJ10058,bA6J24.2
Gene ID:	55064

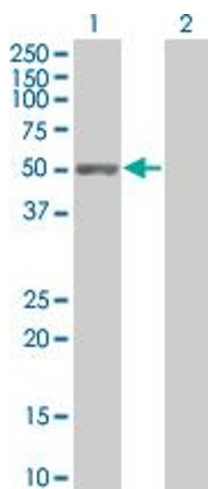
## Application Details

Application Notes:	Optimal working dilution should be determined by the investigator.
Restrictions:	For Research Use only

## Handling

Format:	Liquid
Buffer:	No additive
Preservative:	Without preservative
Handling Advice:	Aliquot to avoid repeated freezing and thawing.
Storage:	-20 °C
Storage Comment:	Store at -20°C or lower. Aliquot to avoid repeated freezing and thawing.

## Images

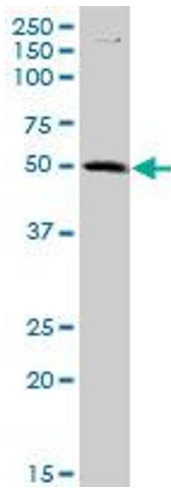


### Western Blotting

**Image 1.** Western Blot analysis of C9orf68 expression in transfected 293T cell line by C9orf68 MaxPab polyclonal antibody.

Lane 1: C9orf68 transfected lysate(43.23 KDa).

Lane 2: Non-transfected lysate.



### Western Blotting

**Image 2.** C9orf68 MaxPab polyclonal antibody. Western Blot analysis of C9orf68 expression in LNCaP.