



[Go to Product page](#)

Datasheet for ABIN527344
anti-RALGPS2 antibody (AA 1-279)

2 Images

Overview

Quantity:	100 µL
Target:	RALGPS2
Binding Specificity:	AA 1-279
Reactivity:	Human
Host:	Rabbit
Clonality:	Polyclonal
Conjugate:	This RALGPS2 antibody is un-conjugated
Application:	Western Blotting (WB), Immunoprecipitation (IP)

Product Details

Purpose:	Rabbit polyclonal antibody raised against a full-length human RALGPS2 protein.
Immunogen:	RALGPS2 (NP_060507.1, 1 a.a. ~ 279 a.a) full-length human protein.
Sequence:	MDLMNGQASS VNIAATASEK SSSSESLSDK GSELKKSFDA VVFDVLKVTP EEYAGQITLM DVPVFKAIQP DELSSCGWNK KEKYSSAPNA VAFTRRFNHV SFWVVREILH AQLTKIRAEV LSHYIKTAKK LYELNNLHAL MAVVSGLQSA PIFRLTKTWA LLSRKDKTTF EKLEYVMSKE DNYKRLRDYI SSLKMTPCIP YLGIYLSDLT YIDSAYPSTG SILENEQRSN LMNNILRIIS DLQQSCEYDI PMLPHVQKYL NSVQYIEELQ KFVEDDNYK
Cross-Reactivity:	Human
Characteristics:	Antibody reactive against mammalian transfected lysate.

Target Details

Target:	RALGPS2
Alternative Name:	RALGPS2 (RALGPS2 Products)
Background:	Full Gene Name: Ral GEF with PH domain and SH3 binding motif 2 Synonyms: FLJ10244,FLJ25604,KIAA0351,dJ595C2.1
Gene ID:	55103
NCBI Accession:	NM_018037

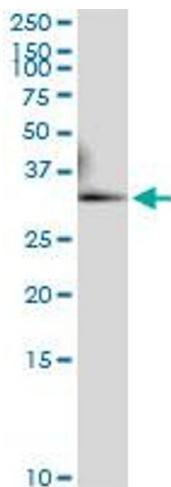
Application Details

Application Notes:	Optimal working dilution should be determined by the investigator.
Restrictions:	For Research Use only

Handling

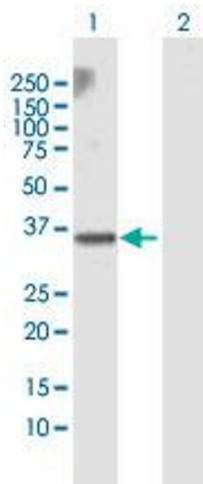
Format:	Liquid
Buffer:	No additive
Preservative:	Without preservative
Handling Advice:	Aliquot to avoid repeated freezing and thawing.
Storage:	-20 °C
Storage Comment:	Store at -20°C or lower. Aliquot to avoid repeated freezing and thawing.

Images



Immunoprecipitation

Image 1. Immunoprecipitation of RALGPS2 transfected lysate using anti-RALGPS2 MaxPab rabbit polyclonal antibody and Protein A Magnetic Bead, and immunoblotted with RALGPS2 MaxPab mouse polyclonal antibody (B01).



Western Blotting

Image 2. Western Blot analysis of RALGPS2 expression in transfected 293T cell line by RALGPS2 MaxPab polyclonal antibody.

Lane 1: RALGPS2 transfected lysate(31.9 kDa).

Lane 2: Non-transfected lysate.