



Datasheet for ABIN527356
anti-CRTAC1 antibody (AA 1-451)



[Go to Product page](#)

1 Image

Overview

Quantity:	50 µg
Target:	CRTAC1
Binding Specificity:	AA 1-451
Reactivity:	Human
Host:	Mouse
Clonality:	Polyclonal
Conjugate:	This CRTAC1 antibody is un-conjugated
Application:	Western Blotting (WB)

Product Details

Purpose:	Mouse polyclonal antibody raised against a full-length human CRTAC1 protein.
Immunogen:	CRTAC1 (AAH34245.1, 1 a.a. ~ 451 a.a) full-length human protein.
Sequence:	MDPEASDLR GILALRDVAA EAGVSKYTGG RGVSVGPILS SSASDIFCDN ENGNFLFHN RGDGTFFVDAASAGVDDPHQ HGRGVALADF NRDGKVDIVY GNWNGPHRLY LQMSTHGKVR FRDIASPKFS MPSPVRTVIT ADFDNDQELE IFFNNIAYRS SSANRLFRVI RREHGDPLIE ELNPGDALEP EGRGTGGVVT DFDGDGMLDL ILSHGESMAQ PLSVFRGNQG FNNNWLRVVP RTRFGAFARG AKVWLYTKKS GAHLRIIDGG SGYLCEMEPV AHFGLGKDEA SSVEVTWPDG KMVSRNVASG EMNSVLEILY PRDEDTLQDP APLECGQGFS QQENGHCMDT NECIQFPFVC PRDKPVCVNT YGSYRCRTNK KCSRGYEPNE DGTACVGTLG QSPGPRPTTP TAAAATAAAA AAAGAATAAP VLVDGDLNLG SVVKESCEPS C
Cross-Reactivity:	Human

Product Details

Characteristics: Antibody reactive against mammalian transfected lysate.

Target Details

Target: CRTAC1

Alternative Name: CRTAC1 ([CRTAC1 Products](#))

Background: Full Gene Name: cartilage acidic protein 1
Synonyms: ASPIC1, CEP-68, FLJ10320

Gene ID: 55118

Application Details

Application Notes: Optimal working dilution should be determined by the investigator.

Restrictions: For Research Use only

Handling

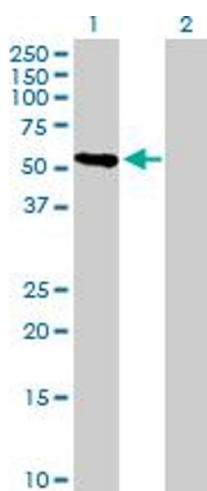
Buffer: In 1x PBS, pH 7.4

Handling Advice: Aliquot to avoid repeated freezing and thawing.

Storage: -20 °C

Storage Comment: Store at -20°C or lower. Aliquot to avoid repeated freezing and thawing.

Images



Western Blotting

Image 1. Western Blot analysis of CRTAC1 expression in transfected 293T cell line by CRTAC1 MaxPab polyclonal antibody.

Lane 1: CRTAC1 transfected lysate(49.61 KDa).

Lane 2: Non-transfected lysate.