

Datasheet for ABIN527371
anti-ELP3/KAT9 antibody (AA 1-547)



[Go to Product page](#)

3 Images

Overview

Quantity:	100 µg
Target:	ELP3/KAT9 (ELP3)
Binding Specificity:	AA 1-547
Reactivity:	Human
Host:	Rabbit
Clonality:	Polyclonal
Conjugate:	This ELP3/KAT9 antibody is un-conjugated
Application:	Western Blotting (WB), Immunofluorescence (IF)

Product Details

Purpose:	Rabbit polyclonal antibody raised against a full-length human ELP3 protein.
Immunogen:	ELP3 (NP_060561.3, 1 a.a. ~ 547 a.a) full-length human protein.
Sequence:	MRQKRKGDLS PAELMMLTIG DVIKQLIEAH EQKDIDLNK VKTKTAAKYG LSAQPRLVDI IAAVPPQYRK VLMPKLLKAKP IRTASGIAVV AVMCKPHRCP HISFTGNICV YCPGGPDSDF EYSTQSYTGY EPTSMRAIRA RYDPFLQTRH RIEQLKQLGH SVDKVEFIVM GGTFMALPEE YRDYFIRNLH DALSGHTSNN IYEAVKYSER SLTKCIGITI ETRPDYCMKR HLSDMLTYGC TRLEIGVQSV YEDVARDTNR GHTVKAVCES FHLAKDSGFK VVAHMMPDLP NVGLERDIEQ FTEFFENPAF RPDGLKLYPT LVIRGTGLYE LWKSGRYKSY SPSDLVELVA RILALVPPWT RVYRVQRDIP MPLVSSGVEH GNLRALALAR MKDLGIQCRD VRTREVGIQE IHHKVRPYQV ELVRRDYVAN GGWETFLSYE DPDQDILIGL LRLRKCEET FRFELGGGVS IVRELHVVYS VVPVSSRDPT KFQHQFGML LMEEAERIAR EEHGSGKIAV ISGVGTRNYY RKIGYRLQGP YMKVMLK

Product Details

Cross-Reactivity:	Human
Characteristics:	Antibody reactive against mammalian transfected lysate.

Target Details

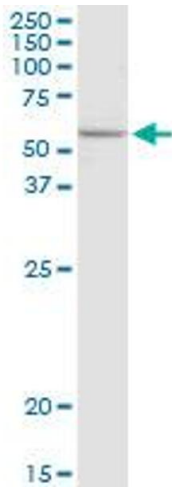
Target:	ELP3/KAT9 (ELP3)
Alternative Name:	ELP3 (ELP3 Products)
Background:	Full Gene Name: elongation protein 3 homolog (S. cerevisiae) Synonyms: FLJ10422,KAT9
Gene ID:	55140
NCBI Accession:	NM_018091

Application Details

Application Notes:	Optimal working dilution should be determined by the investigator.
Restrictions:	For Research Use only

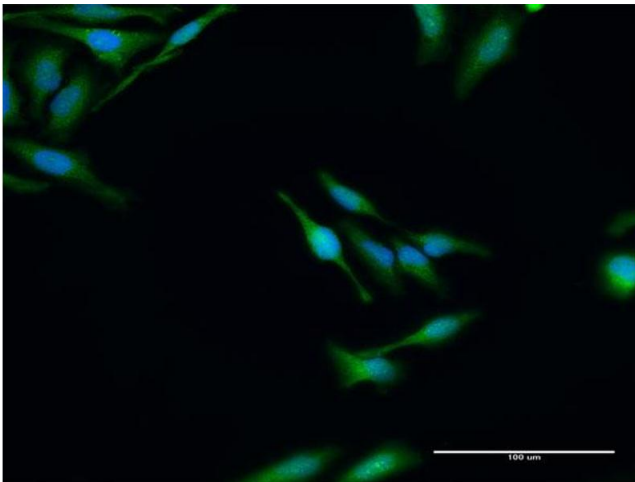
Handling

Buffer:	In 1x PBS, pH 7.4
Handling Advice:	Aliquot to avoid repeated freezing and thawing.
Storage:	-20 °C
Storage Comment:	Store at -20°C or lower. Aliquot to avoid repeated freezing and thawing.



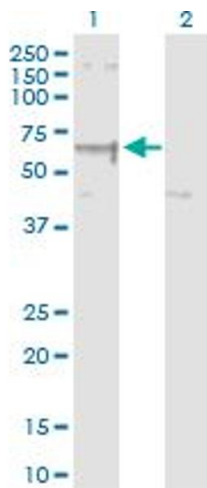
Western Blotting

Image 1. ELP3 MaxPab rabbit polyclonal antibody. Western Blot analysis of ELP3 expression in A-431.



Immunofluorescence

Image 2. Immunofluorescence of purified MaxPab antibody to ELP3 on HeLa cell. [antibody concentration 30 ug/ml]



Western Blotting

Image 3. Western Blot analysis of ELP3 expression in transfected 293T cell line by ELP3 MaxPab polyclonal antibody.

Lane 1: ELP3 transfected lysate(62.30 KDa).

Lane 2: Non-transfected lysate.