



[Go to Product page](#)

Datasheet for ABIN527410  
**anti-RPRD1A antibody (AA 1-289)**

4 Images

Overview

Quantity:	50 µg
Target:	RPRD1A
Binding Specificity:	AA 1-289
Reactivity:	Human
Host:	Mouse
Clonality:	Polyclonal
Conjugate:	This RPRD1A antibody is un-conjugated
Application:	Western Blotting (WB), Immunofluorescence (IF)

Product Details

Purpose:	Mouse polyclonal antibody raised against a full-length human RPRD1A protein.
Immunogen:	RPRD1A (AAH10136.1, 1 a.a. ~ 289 a.a) full-length human protein.
Sequence:	MSAFSEAAL KKLSELSNSQ QSVQTLSSLWL IHHRKHSRPI VTWWERELRK AKPNRKLTFL YLANDVIQNS KRKGPEFTKD FAPVIVEAFK HVSETDESC KKHLGRVLSI WEERSVYEND VLEQLKQALY GDKKPRKRTY EQIKVDENEN CSSLGSPSEP PQTLDLVRAL QDLENAASGD AAVHQRIASL PVEVQEVSL DKITDKESGE RLSKMVEDAC MLLADYNGRL AAEIDDRKQL TRMLADFLRC QKEALAEKEH KLEILDMGVS SNDVVTISIF FLLKINIKP
Cross-Reactivity:	Human
Characteristics:	Antibody reactive against mammalian transfected lysate.

## Target Details

Target:	RPRD1A
Alternative Name:	RPRD1A ( <a href="#">RPRD1A Products</a> )
Background:	Full Gene Name: regulation of nuclear pre-mRNA domain containing 1A Synonyms: FLJ10656,HsT3101,MGC19513,P15RS
Gene ID:	55197

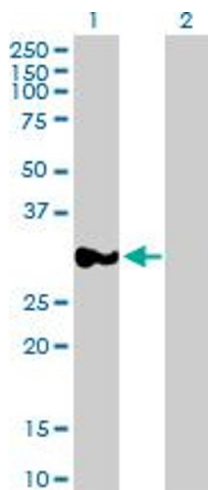
## Application Details

Application Notes:	Optimal working dilution should be determined by the investigator.
Restrictions:	For Research Use only

## Handling

Buffer:	In 1x PBS, pH 7.4
Handling Advice:	Aliquot to avoid repeated freezing and thawing.
Storage:	-20 °C
Storage Comment:	Store at -20°C or lower. Aliquot to avoid repeated freezing and thawing.

## Images

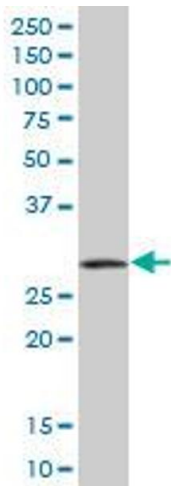


### Western Blotting

**Image 1.** Western Blot analysis of RPRD1A expression in transfected 293T cell line by RPRD1A MaxPab polyclonal antibody.

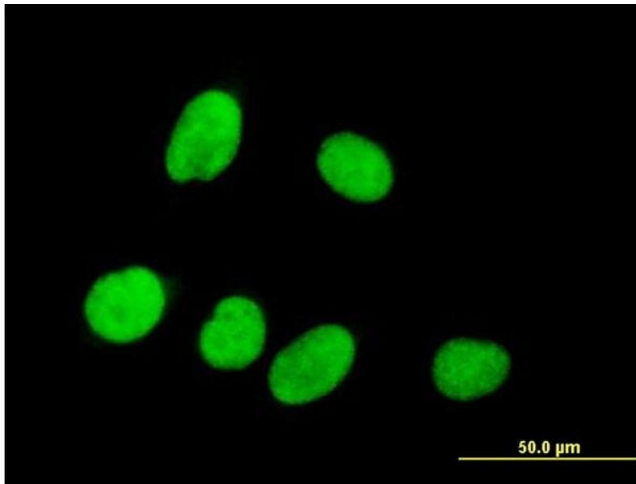
Lane 1: RPRD1A transfected lysate(31.79 KDa).

Lane 2: Non-transfected lysate.



### Western Blotting

**Image 2.** RPRD1A MaxPab polyclonal antibody. Western Blot analysis of RPRD1A expression in human liver.



### Immunofluorescence

**Image 3.** Immunofluorescence of purified MaxPab antibody to RPRD1A on HeLa cell. [antibody concentration 10 ug/ml]

Please check the [product details page](#) for more images. Overall 4 images are available for ABIN527410.