



[Go to Product page](#)

Datasheet for ABIN527411
anti-RPRD1A antibody (AA 1-289)

1 Image

Overview

Quantity:	100 µL
Target:	RPRD1A
Binding Specificity:	AA 1-289
Reactivity:	Human
Host:	Rabbit
Clonality:	Polyclonal
Conjugate:	This RPRD1A antibody is un-conjugated
Application:	Immunoprecipitation (IP)

Product Details

Purpose:	Rabbit polyclonal antibody raised against a full-length human RPRD1A protein.
Immunogen:	RPRD1A (AAH10136.1, 1 a.a. ~ 289 a.a) full-length human protein.
Sequence:	MSAFSEAALE KKLSELSNSQ QSVQTLSSLWL IHHRKHSRPI VTWWERELRK AKPNRKLTFL YLANDVIQNS KRKGPEFTKD FAPVIVEAFK HVSSETDESC KKHLGRVLSI WEERSVYEND VLEQLKQALY GDKKPRKRTY EQIKVDENEN CSSLGSPSEP PQTLDLVRAL QDLENAASGD AAVHQRIASL PVEVQEVSLI DKITDKESGE RLSKMVEDAC MLLADYNGRL AAEIDDRKQL TRMLADFLRC QKEALAEKEH KLEILDMGVS SNDVVTISIF FLLKINIKP
Cross-Reactivity:	Human
Characteristics:	Antibody reactive against mammalian transfected lysate.

Target Details

Target:	RPRD1A
Alternative Name:	RPRD1A (RPRD1A Products)
Background:	Full Gene Name: regulation of nuclear pre-mRNA domain containing 1A Synonyms: FLJ10656,HsT3101,MGC19513,P15RS
Gene ID:	55197

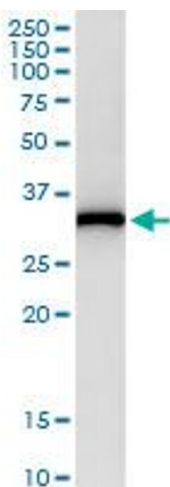
Application Details

Application Notes:	Optimal working dilution should be determined by the investigator.
Restrictions:	For Research Use only

Handling

Format:	Liquid
Buffer:	No additive
Preservative:	Without preservative
Handling Advice:	Aliquot to avoid repeated freezing and thawing.
Storage:	-20 °C
Storage Comment:	Store at -20°C or lower. Aliquot to avoid repeated freezing and thawing.

Images



Immunoprecipitation

Image 1. Immunoprecipitation of RPRD1A transfected lysate using anti-RPRD1A MaxPab rabbit polyclonal antibody and Protein A Magnetic Bead, and immunoblotted with RPRD1A purified MaxPab mouse polyclonal antibody (B01P).