



[Go to Product page](#)

Datasheet for ABIN527417
anti-MAP1S antibody (AA 1-1059)

1 Image

Overview

Quantity:	50 µg
Target:	MAP1S
Binding Specificity:	AA 1-1059
Reactivity:	Human
Host:	Mouse
Clonality:	Polyclonal
Conjugate:	This MAP1S antibody is un-conjugated
Application:	Western Blotting (WB)

Product Details

Purpose:	Mouse polyclonal antibody raised against a full-length human MAP1S protein.
Immunogen:	MAP1S (AAH80547.1, 1 a.a. ~ 1059 a.a) full-length human protein.
Sequence:	MAAVAGSGAA AAPSSLLLVV GSEFGSPGLL TYVLEELERG IRSWDVDPGV CNLDEQLKVF VSRHSATFSS IVKGQRLHH RGDNLETLVL LNPSDKSLYD ELRNLLDPA SHKLLVLGAP CLEETGELLL QTGGFSPHHF LQVLKDREIR DILATTPPVV QPPILTITCP TFGDWAQLAP AVPGLQGALR LQLRLNPPAQ LPNSEGLCEF LEYVAESLEP PSPFELLEPP TSGGFLRLGR PCCYIFPGGL GDAFFAVNG FTVLVNNGSN PKSSFVKLVR HLDRVDAVLV THPGADSLPG LNSLLRRKLA ERSEVAAGGG SWDDRLRRLI SPNLGVVFFN ACEAASRLAR GEDEAELALS LLAQLGITPL PLSRGPVPAK PTVLFEKMGV GRLDMYVLHP PSAGAERTLA CVCALLVWHP AGPGEKVVRV LFPGCTPPAC LLDGLVRLQH LRFLREPVVT PQDLEGPGRA ESKEVSGSRD SSKREGLLAT HPRPGQERPG VARKEPARAE APRKTEKEAK TPRELKDKPK PSVSRTQPRE VRRRAASSVPN LKKTNAQAAP KPRKAPSTSH SGFPPVANGP RSPPSLRCGE ASPPSAACGS

Product Details

PASQLVATPS LELGPIPAGE EKALELPLAA SSIPRPRTPS PESHRSAPAG SERLSLSPLR
GGEAGPDASP TVTTPTVTTT SLPAEVGSPH STEVDESLSV SFEQVLPPSA PTSEAGLSLP
LRGPRARRSA SPHDVDLCLV SPCEFEHRKA VPMAPAPASP GSSNDSSARS QERAGGLGAE
ETPPTSSES LPTLSDSDPV PLAPGAADSD EDTEGFGVPR HDPLPDPLKV PPPLPDPSSI
CMVDPEMLPP KTARQTENVS RTRKPLARPN SRAAAPKATP VAAAKTKGLA GGDRASRPLS
ARSEPSEKGG RAPLSRKSST PKTATRGPSP SASSRPGVSA TPPKSPVYLD LAYLPSGSSA
HLVDEEFFQR VRALCYVISG QDQRKEEGMR AVLDALLASK QHWDRDLQVT LIPTFDSVAM
HTWYAETHAR HQALGITVLG SNSMVSMQDD AFPACKVEF

Cross-Reactivity:	Human
Characteristics:	Antibody reactive against mammalian transfected lysate.

Target Details

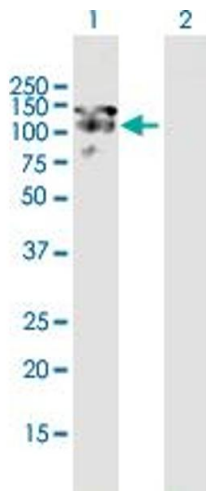
Target:	MAP1S
Alternative Name:	MAP1S (MAP1S Products)
Background:	Full Gene Name: microtubule-associated protein 1S Synonyms: BPY2IP1,C19orf5,FLJ10669,MAP8,MGC133087,VCY2IP-1,VCY2IP1
Gene ID:	55201

Application Details

Application Notes:	Optimal working dilution should be determined by the investigator.
Restrictions:	For Research Use only

Handling

Buffer:	In 1x PBS, pH 7.4
Handling Advice:	Aliquot to avoid repeated freezing and thawing.
Storage:	-20 °C
Storage Comment:	Store at -20°C or lower. Aliquot to avoid repeated freezing and thawing.



Western Blotting

Image 1. Western Blot analysis of MAP1S expression in transfected 293T cell line by MAP1S MaxPab polyclonal antibody.

Lane 1: BPY2IP1 transfected lysate(116.49 KDa).

Lane 2: Non-transfected lysate.