



[Go to Product page](#)

Datasheet for ABIN527419

anti-LGI2 antibody (AA 446-545)

1 Image

Overview

Quantity:	50 µL
Target:	LGI2
Binding Specificity:	AA 446-545
Reactivity:	Human
Host:	Mouse
Clonality:	Polyclonal
Conjugate:	This LGI2 antibody is un-conjugated
Application:	ELISA, Western Blotting (WB)

Product Details

Purpose:	Mouse polyclonal antibody raised against a partial recombinant LGI2.
Immunogen:	LGI2 (NP_060646, 446 a.a. ~ 545 a.a) partial recombinant protein with GST tag.
Sequence:	MRWNSKQFVE IQALPSRGAM TLQPFSFKDN HYLALGSDYT FSQIQWDKE KQLFKKFKEI YVQAPRSFTA VSTDRRDFFF ASSFKGKTKI FEHIIVDLSL
Cross-Reactivity:	Human
Characteristics:	Antibody Reactive Against Recombinant Protein.

Target Details

Target:	LGI2
Alternative Name:	LGI2 (LGI2 Products)

Target Details

Background:	Full Gene Name: leucine-rich repeat LGI family, member 2 Synonyms: FLJ10675,KIAA1916,LGIL2,MGC126808,MGC126810
Gene ID:	55203
NCBI Accession:	NM_018176

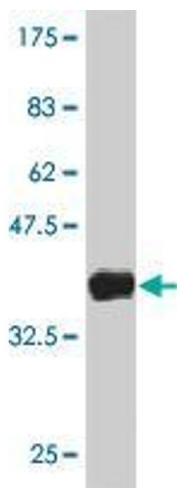
Application Details

Application Notes:	Optimal working dilution should be determined by the investigator.
Restrictions:	For Research Use only

Handling

Format:	Liquid
Buffer:	50 % glycerol
Handling Advice:	Aliquot to avoid repeated freezing and thawing.
Storage:	-20 °C
Storage Comment:	Store at -20°C or lower. Aliquot to avoid repeated freezing and thawing.

Images



Western Blotting

Image 1. Western Blot detection against Immunogen (37.11 kDa).