



[Go to Product page](#)

Datasheet for ABIN527433
anti-LRRC20 antibody (AA 1-184)

1 Image

Overview

Quantity:	50 µg
Target:	LRRC20
Binding Specificity:	AA 1-184
Reactivity:	Human
Host:	Mouse
Clonality:	Polyclonal
Conjugate:	This LRRC20 antibody is un-conjugated
Application:	Western Blotting (WB)

Product Details

Purpose:	Mouse polyclonal antibody raised against a full-length human LRRC20 protein.
Immunogen:	LRRC20 (NP_997002.1, 1 a.a. ~ 184 a.a) full-length human protein.
Sequence:	MLKKMGEAVA RVARKVNETV ESGDSDLDA ECKLVSPFPIG IYKVLNRNVSG QIHLITLANN ELKSLTSKFM TTFSQLRELH LEGNFLHRLP SEVSALQHLK AIDLSRNQFQ DFPEQLTALP ALETINLEEN EIVDVPVEKL AAMPALRSIN LRFNPLNAEV RVIAPPLIKF DMLMSPEGAR APLP
Cross-Reactivity:	Human
Characteristics:	Antibody reactive against mammalian transfected lysate.

Target Details

Target:	LRRC20
---------	--------

Target Details

Alternative Name:	LRRC20 (LRRC20 Products)
Background:	Full Gene Name: leucine rich repeat containing 20 Synonyms: FLJ10751,FLJ10844
Gene ID:	55222
NCBI Accession:	NM_207119

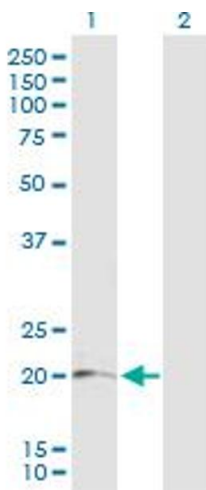
Application Details

Application Notes:	Optimal working dilution should be determined by the investigator.
Restrictions:	For Research Use only

Handling

Buffer:	In 1x PBS, pH 7.4
Handling Advice:	Aliquot to avoid repeated freezing and thawing.
Storage:	-20 °C
Storage Comment:	Store at -20°C or lower. Aliquot to avoid repeated freezing and thawing.

Images



Western Blotting

Image 1. Western Blot analysis of LRRC20 expression in transfected 293T cell line by LRRC20 MaxPab polyclonal antibody.

Lane 1: LRRC20 transfected lysate(20.50 KDa).

Lane 2: Non-transfected lysate.