

Datasheet for ABIN527464

anti-Phosphoglucomutase 2 antibody (AA 1-612)



[Go to Product page](#)

1 Image

Overview

Quantity:	100 µg
Target:	Phosphoglucomutase 2 (PGM2)
Binding Specificity:	AA 1-612
Reactivity:	Human
Host:	Rabbit
Clonality:	Polyclonal
Conjugate:	This Phosphoglucomutase 2 antibody is un-conjugated
Application:	Western Blotting (WB)

Product Details

Purpose:	Rabbit polyclonal antibody raised against a full-length human PGM2 protein.
Immunogen:	PGM2 (NP_060760.2, 1 a.a. ~ 612 a.a) full-length human protein.
Sequence:	MAAPEGSGLG EDARLDQETA QWLRWDKNSL TLEAVKRLIA EGNKEELRKC FGARMEFGTA GLRAAMGPGI SRMNDLTIQ TTQGFCRYLE KQFSDLKQKG IVISFDARAH PSSGGSSRRF ARLAATTFIS QGIPVYLFSD ITPTPFVPFT VSHLKLCAGI MITASHNPKQ DNGYKVYWDN GAQIISPHDK GISQAIEENL EPWPQAWDDS LIDSSPLLHN PSASINNDYF EDLKKYCFHR SVNRETKVKF VHTSVHGVGH SFVQSAFAKAF DLVPEAVPE QKDPDPEFPT VKYPNPEEGK GVLTLFALA DKTKARIVLA NDPADRLAV AEQDSGEWR VFSGNELGAL LGWWLFTSWK EKNQDRSALK DTYMLSSTVS SKILRAIALK EGFHFEETLT GFKWMGNRAK QLIDQGKTVL FAFEEAIGYM CCPFVLDKDG VSAAVISAEI ASFLATKNLS LSQQLKAIYV EYGYHITKAS YFICHDQETI KKLFFENLRNY DGKNNYPKAC GKFEISAIRD LTTGYDDSQP DKKAVLPTSK SSQMITFTFA NGGVATMRTS GTEPKIKYYA ELCAPPGNSD PEQLKKELNE LVSAIEEHFF

Product Details

QPQKYNLQPK AD

Cross-Reactivity: Human

Characteristics: Antibody reactive against mammalian transfected lysate.

Target Details

Target: Phosphoglucomutase 2 (PGM2)

Alternative Name: PGM2 ([PGM2 Products](#))

Background: Full Gene Name: phosphoglucomutase 2
Synonyms: FLJ10983,MSTP006

Gene ID: 55276

NCBI Accession: [NM_018290](#)

Pathways: [Cellular Glucan Metabolic Process](#)

Application Details

Application Notes: Optimal working dilution should be determined by the investigator.

Restrictions: For Research Use only

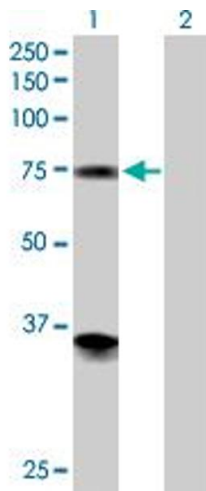
Handling

Buffer: In 1x PBS, pH 7.4

Handling Advice: Aliquot to avoid repeated freezing and thawing.

Storage: -20 °C

Storage Comment: Store at -20°C or lower. Aliquot to avoid repeated freezing and thawing.



Western Blotting

Image 1. Western Blot analysis of PGM2 expression in transfected 293T cell line by PGM2 MaxPab polyclonal antibody.

Lane 1: PGM2 transfected lysate(68.30 KDa).

Lane 2: Non-transfected lysate.