



[Go to Product page](#)

Datasheet for ABIN527490

anti-Riboflavin Kinase antibody (AA 1-162)

1 Image

1 Publication

Overview

Quantity:	50 µL
Target:	Riboflavin Kinase (RFK)
Binding Specificity:	AA 1-162
Reactivity:	Human
Host:	Mouse
Clonality:	Polyclonal
Conjugate:	This Riboflavin Kinase antibody is un-conjugated
Application:	Western Blotting (WB)

Product Details

Purpose:	Mouse polyclonal antibody raised against a full-length human RFK protein.
Immunogen:	RFK (NP_060809.2, 1 a.a. ~ 162 a.a) full-length human protein.
Sequence:	MPRADCIMRH LPYFCRGQVV RGFGRGSKQL GIPTANFPEQ VVDNLPADIS TGIYYGWASV GSGDVHKMVV SIGWNPYYKN TKKSMETHIM HTFKEDFYGE ILNVAIVGYL RPEKNFDSLE SLISAIQGDI EEAKKRLELP EHLKIKEDNF FQVSKSKIMN GH
Cross-Reactivity:	Human
Characteristics:	Antibody reactive against mammalian transfected lysate.

Target Details

Target:	Riboflavin Kinase (RFK)
---------	-------------------------

Target Details

Alternative Name:	RFK (RFK Products)
Background:	Full Gene Name: riboflavin kinase Synonyms: FLJ11149,RIFK
Gene ID:	55312
NCBI Accession:	NM_018339

Application Details

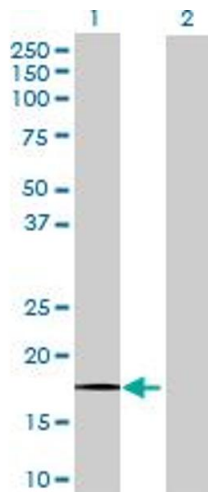
Application Notes:	Optimal working dilution should be determined by the investigator.
Restrictions:	For Research Use only

Handling

Format:	Liquid
Buffer:	No additive
Preservative:	Without preservative
Handling Advice:	Aliquot to avoid repeated freezing and thawing.
Storage:	-20 °C
Storage Comment:	Store at -20°C or lower. Aliquot to avoid repeated freezing and thawing.

Publications

Product cited in:	Lin, Chen, Chen, Liou, Chen, Yang, Shiue: "Identification of early transcripts related to male development in chicken embryos." in: Theriogenology , Vol. 74, Issue 7, pp. 1161-1178.e1-8, (2010) (PubMed).
-------------------	--



Western Blotting

Image 1. Western Blot analysis of RFK expression in transfected 293T cell line by RFK MaxPab polyclonal antibody.

Lane 1: RFK transfected lysate(17.82 KDa).

Lane 2: Non-transfected lysate.