



[Go to Product page](#)

Datasheet for ABIN527497

## anti-ABCF3 antibody (AA 1-709)

### 2 Images

#### Overview

Quantity:	50 µL
Target:	ABCF3
Binding Specificity:	AA 1-709
Reactivity:	Human
Host:	Mouse
Clonality:	Polyclonal
Conjugate:	This ABCF3 antibody is un-conjugated
Application:	Western Blotting (WB)

#### Product Details

Purpose:	Mouse polyclonal antibody raised against a full-length human ABCF3 protein.
Immunogen:	ABCF3 (AAH09253, 1 a.a. ~ 709 a.a) full-length human protein.
Sequence:	<p>MATCAEILRS EFPEIDGQVF DYVTGVLHSG SADFESVDDL VEA VGELLQE VSGDSKDDAG IRAVCQRMYN TLRLAEPQSQ GNSQVLLDAP IQLSKITENY DCGTKLPGLL KREQSSTVNA KKLEKAEARL KAKQEKRSEK DTLKTSNPLV LEEASASQAG SRKESRLESS GKNKSYDVRI ENFDVSFGDR VLLAGADVNL AWGRRYGLVG RNLGKTTLL KMLATRSLRV PAHISLLHVE QEVAGDDTPA LQSVLES SV REDLLRRERE LTAQIAAGRA EGSEAAELAE IYAKLEEIEA DKAPARASVI LAGLGFTPKM QQPTREFSG GWRMRLALAR ALFARPDLLL LDEPTNMLDV RAILWLENYL QTW PSTILVV SHDRNFLNAI ATDIIHLHSQ RLDGYRGDFE TFIKSKQERL LNQQREYEAQ QQYRQHIQVF IDRFRYNANR ASQVQSKLKM LEKLPKLPV DKESVVMKF PDGFEKFSPP ILQLDEVDFY YDPKHVIFSR LSVSADLESR ICVVGENGAG KSTMLKLLLG DLAPVRGIRH AHRNLKIGYF SQHHVEQLDL NVSAVELLAR KFPGRPEEEY RHQLGRYGIS</p>

## Product Details

---

GELAMRPLAS LSGGQKSRVA FAQMTMPCPN FYILDEPTNH LDMETIEALG RALNNFRGGV  
ILVSHDERFI RLVCRELWVC EGGGVTRVEG GFDQYRALLQ EQFRREGFL

Cross-Reactivity: Human

Characteristics: Antibody reactive against mammalian transfected lysate.

## Target Details

---

Target: ABCF3

Alternative Name: ABCF3 ([ABCF3 Products](#))

Background: Full Gene Name: ATP-binding cassette, sub-family F (GCN20), member 3  
Synonyms: EST201864,FLJ11198

Gene ID: 55324

## Application Details

---

Application Notes: Optimal working dilution should be determined by the investigator.

Restrictions: For Research Use only

## Handling

---

Format: Liquid

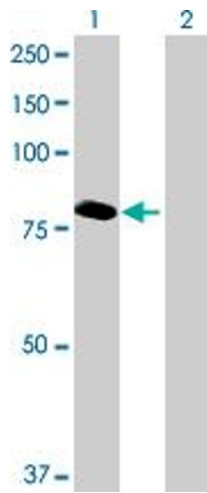
Buffer: No additive

Preservative: Without preservative

Handling Advice: Aliquot to avoid repeated freezing and thawing.

Storage: -20 °C

Storage Comment: Store at -20°C or lower. Aliquot to avoid repeated freezing and thawing.

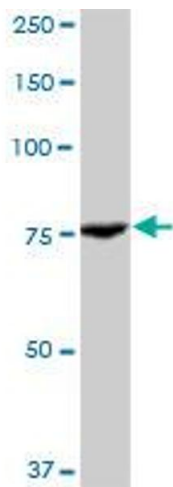


#### Western Blotting

**Image 1.** Western Blot analysis of ABCF3 expression in transfected 293T cell line by ABCF3 MaxPab polyclonal antibody.

Lane 1: ABCF3 transfected lysate(77.99 KDa).

Lane 2: Non-transfected lysate.



#### Western Blotting

**Image 2.** ABCF3 MaxPab polyclonal antibody. Western Blot analysis of ABCF3 expression in human placenta.