

Datasheet for ABIN527514
anti-CHDH antibody (AA 1-594)



[Go to Product page](#)

3 Images

Overview

Quantity:	100 µg
Target:	CHDH
Binding Specificity:	AA 1-594
Reactivity:	Human
Host:	Rabbit
Clonality:	Polyclonal
Conjugate:	This CHDH antibody is un-conjugated
Application:	Western Blotting (WB)

Product Details

Purpose:	Rabbit polyclonal antibody raised against a full-length human CHDH protein.
Immunogen:	CHDH (NP_060867.1, 1 a.a. ~ 594 a.a) full-length human protein.
Sequence:	MWCLLRGLGR PGALARGALG QQQLGARAL ASAGSESRDE YSYVVVGAGS AGCVLAGRLT EDPAERVLLL EAGPKDVRAG SKRLSWKIHM PAALVANLCD DRYNWCYHTE VQRGLDGRVL YWPRGRVWGG SSSLNAMVYV RGHAEDYERW QRQGARGWDY AHCLPYFRKA QGHEL GASRY RGADGPLRVS RGKTNHPLHC AFLEATQQAG YPLTEDMNGF QQEGFGWMDM TIHEGKRWSA ACAYLHPALS RTNLKAEAET LVSRVLFEGT RAVGVEYVKN GQSHRAYASK EVILSGGAIN SPQLMLSGI GNADDLKKLG IPVVCHLPGV GQNLQDHLEI YIQQACTRPI TLHSAQKPLR KVCIGLEWLW KFTGEGATAH LETGGFIRSQ PGVPHPIQF HFLPSQVIDH GRVPTQQEAY QVHVGP MRGT SVGWLKLRSA NPQDHPVIQP NYLSTETDIE DFRLCVKLTR EIFAQEALAP FRGKELQPGS HIQSDKEIDA FVRAKADSAY HPSCTCKMGQ PSDPTAVVDP QTRVLGVENL RVVDASIMPS MVSGNLNAPT IMIAEKAADI IKGQPALWDK DVPVYKPRTL ATQR

Product Details

Cross-Reactivity:	Human, Mouse
Characteristics:	Antibody reactive against mammalian transfected lysate.

Target Details

Target:	CHDH
Alternative Name:	CHDH (CHDH Products)
Background:	Full Gene Name: choline dehydrogenase Synonyms:
Gene ID:	55349
NCBI Accession:	NM_018397

Application Details

Application Notes:	Optimal working dilution should be determined by the investigator.
Restrictions:	For Research Use only

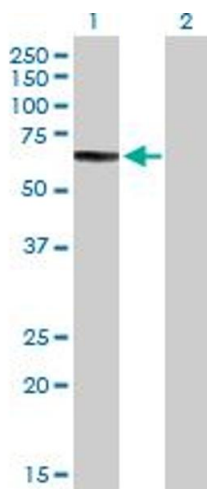
Handling

Buffer:	In 1x PBS, pH 7.4
Handling Advice:	Aliquot to avoid repeated freezing and thawing.
Storage:	-20 °C
Storage Comment:	Store at -20°C or lower. Aliquot to avoid repeated freezing and thawing.



Western Blotting

Image 1. CHDH MaxPab rabbit polyclonal antibody. Western Blot analysis of CHDH expression in mouse kidney.

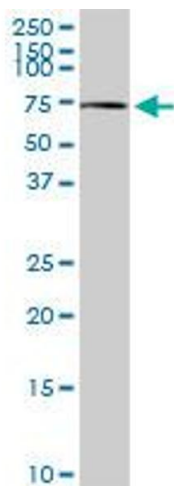


Western Blotting

Image 2. Western Blot analysis of CHDH expression in transfected 293T cell line by CHDH MaxPab polyclonal antibody.

Lane 1: CHDH transfected lysate(65.40 KDa).

Lane 2: Non-transfected lysate.



Western Blotting

Image 3. CHDH MaxPab rabbit polyclonal antibody. Western Blot analysis of CHDH expression in human kidney.