

Datasheet for ABIN527519  
**anti-TBC1D2 antibody (AA 1-502)**



[Go to Product page](#)

2 Images

## Overview

Quantity:	50 µg
Target:	TBC1D2
Binding Specificity:	AA 1-502
Reactivity:	Human
Host:	Mouse
Clonality:	Polyclonal
Conjugate:	This TBC1D2 antibody is un-conjugated
Application:	Western Blotting (WB)

## Product Details

Purpose:	Mouse polyclonal antibody raised against a full-length human TBC1D2 protein.
Immunogen:	TBC1D2 (AAH71978.1, 1 a.a. ~ 502 a.a) full-length human protein.
Sequence:	MPIPWTASTS PLRPDAANRD FLSQQGKIEH LKDDMEAYRT QNCFLNSEIH QVTKIWRKVA EKEKALLTKC AYLQARNCQV ESKYLAGLRR LQEALGDEAS ECSELLRQLV QEALQWEAGE ASSDSIELSP ISKYDEYGFL TVPDYEVEDL KLLAKIQALE SRSHLLGLE AVDRPLRERW AALGDLVPSA ELKQLLRAGV PREHRPRVWR WLVLHVRVQHL HTPGCYQELL SRGQAREHPA ARQIELDLNR TFPNNKHFTC PTSSFPDKLR RVLLAFSWQN PTIGYCQGLN RLAAIALLLV EEEESAFWCL VAIVETIMPA DYYCNTLTAS QVDQRVLQDL LSEKLPRLMA HLGQHHVDLS LVTFNWFLVV FADSLISNIL LRVWDAFLYE GTKVVFYRYAL AIFKYNEKEI LRLQNGLEIY QYLRFFTKTI SNSRKL MNIA FNDMNPFRMK QLRQLRMVHR ERLEAELREL EQLKAEYLER RASRRRAVSE GCASEDEVEG EA

## Product Details

Cross-Reactivity:	Human
Characteristics:	Antibody reactive against mammalian transfected lysate.

## Target Details

Target:	TBC1D2
Alternative Name:	TBC1D2 ( <a href="#">TBC1D2 Products</a> )
Background:	Full Gene Name: TBC1 domain family, member 2 Synonyms: DKFZp761D1823,FLJ10702,FLJ16244,FLJ42782,PARIS-1,PARIS1,TBC1D2A
Gene ID:	55357

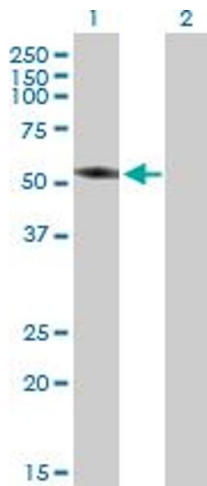
## Application Details

Application Notes:	Optimal working dilution should be determined by the investigator.
Restrictions:	For Research Use only

## Handling

Buffer:	In 1x PBS, pH 7.4
Handling Advice:	Aliquot to avoid repeated freezing and thawing.
Storage:	-20 °C
Storage Comment:	Store at -20°C or lower. Aliquot to avoid repeated freezing and thawing.

## Images

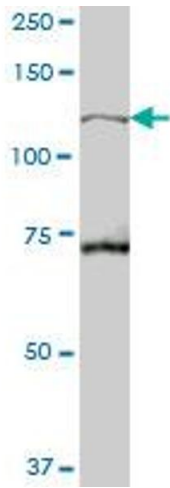


### Western Blotting

**Image 1.** Western Blot analysis of TBC1D2 expression in transfected 293T cell line by TBC1D2 MaxPab polyclonal antibody.

Lane 1: TBC1D2 transfected lysate(55.22 KDa).

Lane 2: Non-transfected lysate.



### Western Blotting

**Image 2.** TBC1D2 MaxPab polyclonal antibody. Western Blot analysis of TBC1D2 expression in human spleen.