



[Go to Product page](#)

Datasheet for ABIN527555  
**anti-DDX43 antibody (AA 2-90)**

4 Images

Overview

Quantity:	100 µg
Target:	DDX43
Binding Specificity:	AA 2-90
Reactivity:	Human
Host:	Mouse
Clonality:	Monoclonal
Conjugate:	This DDX43 antibody is un-conjugated
Application:	Western Blotting (WB), ELISA, Immunofluorescence (IF)

Product Details

Purpose:	Mouse monoclonal antibody raised against a partial recombinant DDX43.
Immunogen:	DDX43 (NP_061135.1, 2 a.a. ~ 90 a.a) partial recombinant protein with GST tag. MW of the GST tag alone is 26 KDa.
Sequence:	SHHGGAPKAS TWVVASRRSS TVSRAPERRP AEELNRTGPE GYSVGRGGRW RGTSRPPEAV AAGHEELPLC FALKSHFVGA VIGRGGSKI
Clone:	3G12
Isotype:	IgG2a
Cross-Reactivity:	Human
Characteristics:	Antibody Reactive Against Recombinant Protein.

## Target Details

Target:	DDX43
Alternative Name:	DDX43 ( <a href="#">DDX43 Products</a> )
Background:	Full Gene Name: DEAD (Asp-Glu-Ala-Asp) box polypeptide 43 Synonyms: DKFZp434H2114,HAGE
Gene ID:	55510
NCBI Accession:	<a href="#">NM_018665</a>

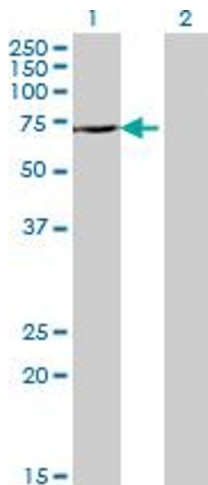
## Application Details

Application Notes:	Optimal working dilution should be determined by the investigator.
Restrictions:	For Research Use only

## Handling

Buffer:	In 1x PBS, pH 7.4
Handling Advice:	Aliquot to avoid repeated freezing and thawing.
Storage:	-20 °C
Storage Comment:	Store at -20°C or lower. Aliquot to avoid repeated freezing and thawing.

## Images

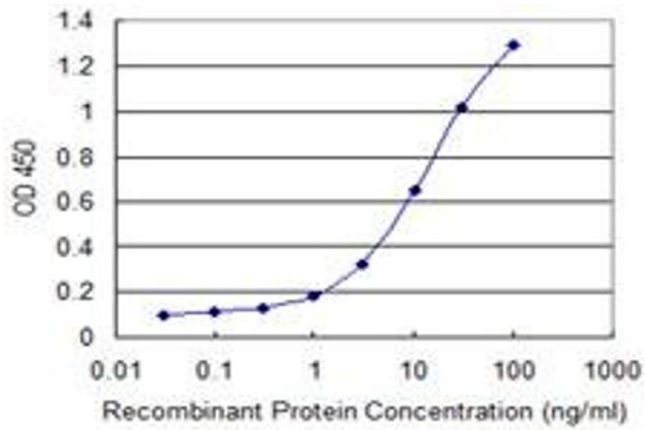


### Western Blotting

**Image 1.** Western Blot analysis of DDX43 expression in transfected 293T cell line by DDX43 monoclonal antibody (M07), clone 3G12.

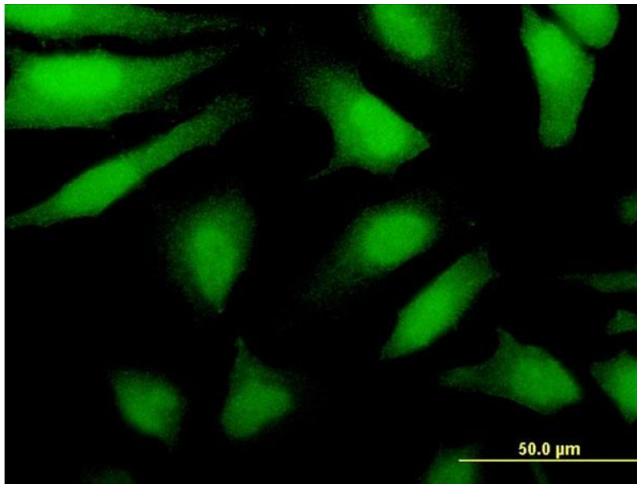
Lane 1: DDX43 transfected lysate(72.9 kDa).

Lane 2: Non-transfected lysate.



### ELISA

**Image 2.** Detection limit for recombinant GST tagged DDX43 is 0.3 ng/ml as a capture antibody.



### Immunofluorescence

**Image 3.** Immunofluorescence of monoclonal antibody to DDX43 on HeLa cell. [antibody concentration 10 ug/ml]

Please check the [product details page](#) for more images. Overall 4 images are available for ABIN527555.