



[Go to Product page](#)

Datasheet for ABIN527556
anti-SAGE1 antibody (AA 357-455)

1 Image

Overview

Quantity:	50 µL
Target:	SAGE1
Binding Specificity:	AA 357-455
Reactivity:	Human
Host:	Mouse
Clonality:	Polyclonal
Conjugate:	This SAGE1 antibody is un-conjugated
Application:	ELISA, Western Blotting (WB)

Product Details

Purpose:	Mouse polyclonal antibody raised against a partial recombinant SAGE1.
Immunogen:	SAGE1 (NP_061136, 357 a.a. ~ 455 a.a) partial recombinant protein with GST tag.
Sequence:	PLPSNALSTV LPGLAYLATA DMPAMSTRDQ HATIIHNLRE EKKDNSQPTP DNVLSAVTPE LINLAGAGIP PMSTRDQYAT VNHHVHEARM ENGQRKQDN
Cross-Reactivity:	Human
Characteristics:	Antibody Reactive Against Recombinant Protein.

Target Details

Target:	SAGE1
Alternative Name:	SAGE1 (SAGE1 Products)

Target Details

Background: Full Gene Name: sarcoma antigen 1
Synonyms: SAGE

Gene ID: 55511

NCBI Accession: [NM_018666](#)

Application Details

Application Notes: Optimal working dilution should be determined by the investigator.

Restrictions: For Research Use only

Handling

Format: Liquid

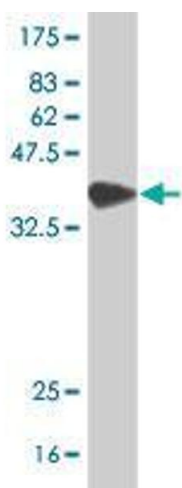
Buffer: 50 % glycerol

Handling Advice: Aliquot to avoid repeated freezing and thawing.

Storage: -20 °C

Storage Comment: Store at -20°C or lower. Aliquot to avoid repeated freezing and thawing.

Images



Western Blotting

Image 1. Western Blot detection against Immunogen (37 KDa).